

# **Report of the Director of Place to the meeting of Regulatory & Appeals Committee to be held on 25<sup>th</sup> April 2024.**

**L**

---

## **Subject:**

**Dog Control Public Space Protection Order for the Bradford District**

## **Summary statement:**

**A report detailing a proposed extension and variation of the existing Dog Control Public Space Protection Order for the Bradford District under the powers arising from the Anti-social Behaviour Crime and Policing Act 2014 (the Act).**

## **EQUALITY & DIVERSITY:**

It is well recognised that anti social behaviour (ASB) has a disproportionate effect on the most vulnerable members of our communities.

The extension of the existing Dog Control Public Space Protection Order supports the Councils Equality Objectives and Equality Plan 2021 - 2025.

It should be noted that the Order contains the following exemption in respect of people with relevant disabilities ” Any person with a disability affecting their mobility, manual dexterity or ability to lift carry or move everyday objects or who relies upon a dog trained by a prescribed charity for assistance are exempt from the prohibition and requirements of this order.”

---

David Shepherd  
Strategic Director- Department of Place  
Report Contact: Amjad Ishaq  
Environmental Services & Enforcement  
Manager  
Phone: (01274) 433682  
E-mail: [amjad.ishaq@bradford.gov.uk](mailto:amjad.ishaq@bradford.gov.uk)

Portfolio:  
Neighbourhoods & Community Safety  
Overview & Scrutiny Area:  
Corporate

## 1. SUMMARY

This report details the extension and proposed variation of the existing Dog Control Public Spaces Protection Order (PSPO) for the Bradford Metropolitan District.

It also details the statutory consultation and offers a summary of the responses to that consultation.

## 2. BACKGROUND

### 2.1 The Act makes provision for:-

- The creation of PSPO's under section 59 of the Act.
- On creation of a PSPO the Act provides for the suspension of a Council's existing byelaws where prohibitions in the byelaws are covered by prohibitions in a PSPO
- The Council's six previously existing Dog Control orders (DCO's) becoming PSPO's on 20<sup>th</sup> October 2017. These were further extended in 2021.

### 2.2 Unless the 2021 City of Bradford Metropolitan District Council Public Space Protection Order (Dog Control) is extended it will end on the 31<sup>st</sup> May 2024.

### 2.3 PSPO's can also be extended, varied or discharged under sections 60 and 61 of the Act respectively.

### 2.4 The table below sets out information relating to dog control issues over the period 2020-2023. The complaints/incidents reported to the Council are listed for each calendar year. In addition to the evidence obtained through the consultation responses these clearly demonstrate the need for restrictions and prohibitions to remain in place.

YEAR	DOG FOULING	STRAYS	DOGS KILLED ON ROAD	DOG CONTROL	DANGEROUS DOGS
2020	318	408	0	6	225
2021	296	359	0	8	293
2022	371	441	2	4	229
2023	417	678	3	13	322

### 2.5 Consultation methodology

#### 2.5.1 The consultation was carried out in accordance with the requirements described in section 72 of the Act.

#### 2.5.2 In accordance with legal requirements, email communications were also sent to all the Parish and Town Councils within the Bradford district, the West Yorkshire Police Service and the West Yorkshire Police and Crime Commissioner.

#### 2.5.3 In addition, possible representative bodies, such as local Friends of Groups, the Kennel Club, Bradford Council of Mosques and other organisations were also contacted and encouraged to participate in the consultation.

#### 2.5.4 Information about the consultation and links to the consultation documents, including the online survey, were posted on the Council's website.

<https://bradford.moderngov.co.uk/mgConsultationDisplay.aspx?ID=671>

**2.5.5** The Council issued press releases (appendix G) and used social media to promote the consultation.

### **Consultation summary findings**

**2.6** The online survey has generated 113 responses and submissions have been received from most wards within the Bradford District. The questions and the summary results of the survey can be found in Appendix A.

**2.6.1** As part of the consultation respondents were asked to comment on where they felt dogs should be on a lead, locations that dogs should be excluded from and to provide any other pertinent comments. Most of the 113 respondents submitted suggestions and comments. These can be found in the appendices B, C and D respectively. These are illuminating comments and reflect the broad feelings of respondents on this issue; that dog control should continue and should be more extensively enforced.

**2.6.2** 99% of respondents said a person in charge of a dog must forthwith remove its faeces from any public open space across the Bradford district.

**2.6.3** 97% of respondents said a person in charge of a dog must keep the dog on a lead around sports grounds, fields, parks and pitches, but only when in use for officiated sporting matches.

**2.6.4** 96% of respondents said a person in charge of a dog must put the dog on a lead when requested to do so by an authorised officer.

**2.6.5** 95% of respondents said a person in charge of a dog must keep the dog on a lead on all bowling greens.

**2.6.6** 93% of respondents said that a person in charge of a dog must have, and produce on request, the appropriate means to pick up dog faeces deposited by their dog.

**2.6.7** 92% of respondents said a person in charge of a dog in cemeteries and churchyards, including burial areas, must keep the dog on a lead.

**2.6.8** 88% of respondents said a person in charge of a dog must not take it into, or keep it within, a fenced/enclosed children's play area.

**2.6.9** 88% of respondents said a person in charge of a dog must not take it into, or keep it within, a Multi-use Games Area.

**2.6.10** 84% of respondents said a person in charge of a dog must keep the dog on a lead around the City Park.

**2.6.11** 72% of respondents said a person in charge of a dog must keep the dog on a lead on footpaths around lakes and ponds.

**2.6.12** 44% of respondents said they regularly walked a dog.

**2.6.13** Most respondents submitted a postcode as part of the survey reply. Responses were received from most of the wards, with Baildon, Ilkley, Shipley and Wharfedale offering the most representation. As part of the formal consultation process a number of specific and detailed comments about the proposals were received. These have been summarized in Appendix E.

### **3. REPORT ISSUES**

- 3.1.1** A Public Space Protection Order is an order that identifies the space(s) to which it applies and can make requirements, or prohibitions within the defined area(s). This means that the Council can require people to do or not to do specific things in a particular area(s) . The Council can grant prohibitions/requirements where it believes that they are reasonable in order to prevent or reduce any detrimental impact. The order can be made so as to apply to either specific people or to everybody within an area. It can also apply at all times, or within specified times and equally to all circumstances, or specified circumstances. The current order has been in place for the maximum three year period. The process of reviews and consultation must be repeated to ensure the issues are still occurring and the order is having the required effect to enable an extension for a further three years and, upon further reviews and consultations taking place, can be extended more than once for further periods of three years.
- 3.1.2** Failure to comply with the order is an offence and breaches of the order can be discharged by use of a fixed penalty notice (FPN).
- 3.1.3** The Act is not overly prescriptive about the necessary process required for application of these powers. It has therefore been necessary to design a process that is appropriate and suitably robust to withstand any challenge that might arise.
- 3.1.4** A Council may extend the period of an existing PSPO if satisfied on reasonable grounds that doing so is necessary to prevent (a) occurrence or recurrence after that time of the activities identified in the order or (b) an increase in the frequency or seriousness of those activities after that time. This is the underlying rationale for this proposed extension and variation of the existing PSPO.

### **4. FINANCIAL & RESOURCE APPRAISAL**

- a. Due to budget pressures if additional public notices and signage are to be required then sufficient funding would need to be identified.
- b. The successful compliance and enforcement of the PSPO is dependent on residents and visitors to Bradford being made aware of the restrictions and prohibitions and be fully understanding of what action is expected of them. . Where necessary information will be added to the Councils website and this will be met from within existing resources. Enforcement is a key element of the continuing compliance with the PSPO.
- c. The signage across the district is currently easy to understand (partly pictorial) and there are sufficient signs to make it clear what restrictions and prohibitions are already in place. Additional campaigns will also be conducted to raise awareness and bring about behaviour change around dog control issues, these will linked to national campaigns promoted by Keep Britain Tidy and other educational initiatives.

### **5. RISK MANAGEMENT AND GOVERNANCE ISSUES**

There are no risk management or governance issues apparent.

### **6. LEGAL APPRAISAL**

- 6.1.1** The Act came into force on 20th October 2014. The Act contains provisions for the making of variations, extensions and the discharge of a PSPO. Section 59 sets out the grounds on which a local authority may make a PSPO

6.1.3 Section 60 provides that PSPOs may not last longer than 3 years, unless extended. Any extension should be done before the time when the PSPO is due to expire. The grounds for extending a PSPO are that the local authority that made the order is satisfied on reasonable grounds that doing so is necessary to prevent (a) occurrence or recurrence after that time of the activities identified in the order or (b) a increase in the frequency or seriousness of those activities after that time..An extension may not be for a period of more than 3 years, and must be published in accordance with regulations.

6.1.4 Section 67 provides that it is an offence for a person without reasonable excuse to do anything that the person is prohibited from doing by a PSPO or to fail to comply with a requirement to which the person is subject under a PSPO. details the offences of any person failing to comply with the order and section 68 enables any such offence to be discharged through the issue of a fixed penalty notice

## **7. OTHER IMPLICATIONS**

### **7.1.1 SUSTAINABILITY IMPLICATIONS**

There are no sustainability implications issues apparent.

### **7.2 TACKLING THE CLIMATE EMERGENCY IMPLICATIONS**

There are no climate emergency implications issues apparent.

### **7.3 COMMUNITY SAFETY IMPLICATIONS**

Lack of dog control can have an adverse impact on community and green spaces. . Any actions, such as the proposed PSPO, that the Council can take to improve community safety and consequently the reputation of the District will be of benefit to residents, visitors and businesses, particularly during the forthcoming City of Culture 2025.

Dog Control PSPO's are a significant element of the wider partnership response to both environmental crime and low level anti social behaviour, which in turn enhance the cleanliness and community safety outcomes.

### **7.4 HUMAN RIGHTS ACT**

Individuals have rights established under the HRA, some of which are absolute and some of which are qualified.

The Council is required under the HRA to balance the rights of those affected by the existing order and proposed order, against the rights of the community to enjoy the areas included in the existing and proposed order without being subject to acts of anti-social behaviour.

### **7.5 TRADE UNION**

There are no trade union implications apparent.

### **7.6 WARD IMPLICATIONS**

There are district wide restriction and prohibitions that cover all wards in the district. Some restriction and prohibitions cover specific locations within wards which are referred to in the PSPO Appendix F.

## **7.7 AREA COMMITTEE ACTION PLAN IMPLICATIONS (for reports to area committees only)**

Not applicable

## **7.8 IMPLICATIONS FOR CHILDREN AND YOUNG PEOPLE**

There are no implications for children and young people.

## **7.9 ISSUES ARISING FROM PRIVACY IMPACT ASSESSMENT**

There are no data protection and information security matters arising from the proposal.

## **8. NOT FOR PUBLICATION DOCUMENTS**

None - There are no items that are not for publication.

## **9. OPTIONS**

9.1 This report provides a summary of the consultation responses and identifies the types of anti-social behaviours of main concern to those who submitted a response. The existing Public Spaces Protection Order may be extended or varied to reflect the issues raised through the consultation process.

9.2 **Option 1** - Do Nothing. Do not extend the PSPO and lose the existing prohibitions and restrictions within the Bradford district.

9.3 **Option 2** Extend the existing Dog Control PSPO for a further 3 years, but without any amendments.

9.4 **Option 3** - Extend the existing Dog Control PSPO for a further 3 years with the amendments set out in the proposed order in Appendix F.

## **10. RECOMMENDATIONS**

That the existing order is extended for a further three years with the amendments as per the attached proposed order in appendix F.

## **11. APPENDICES**

Appendix A - Survey pre-amble, questions and summary results.

Appendix B - Survey response Question 3 suggestions where dogs should be on leads.

Appendix C - Survey response Question 5 suggestions where dogs should be excluded.

Appendix D - Survey response. Question 10 general comments.

Appendix E - Consultee Comments.

Appendix F - Proposed Composite Order.

Appendix G - Press release.

Appendix H – Current Order

## 12. BACKGROUND DOCUMENTS

- 12.1 15<sup>th</sup> October 2020. The Assistant Director Neighbourhood and Customer Services submitted a report (**Document “AL”**) relating to the proposed extension variation of the six existing Dog Control Public Spaces Protection Orders for the Bradford District or, the making of a district wide order under the powers arising from the Anti-social Behaviour Crime and Policing Act 2014 (the Act)

<https://bradford.moderngov.co.uk/documents/s30613/Document%20AL.pdf>

## **Appendices**

### **Appendix A - Survey pre-amble, questions and summary results**

#### PSPO Dogs – Survey questions

Consultation on Public Spaces Protection Orders - dog control.

Have your say on the renewal of the Public Spaces Protection Orders – dog control and dog fouling.

Bradford Council are asking residents and local businesses for their views in a public consultation on the Public Spaces Protection Orders (PSPOs) across Bradford.

The current PSPOs, for dogs and dog control expire in May 2024 and need to be reviewed before they can be extended and/or varied.

The consultation will run until mid March and aims to gather information about which issues are of most concern to residents and businesses which will help with adding new conditions to the PSPOs and the areas they cover.

We want the views of as many local people as possible to help form the future of the Dog Control PSPOs to keep Bradford a safe place to live, work and visit. Feedback from the consultation will be analysed and used to inform the decision about how to progress the PSPO and make sure it is fit for purpose for the years to come.

Please click 'Next' to start the survey

#### **Dog Fouling**

Do you think a person in charge of a dog must forthwith remove the faeces from any public open space across Bradford district?

#### **Means to pick up**

Do you agree that a person in charge of a dog must have and produce on request the appropriate means to pick up dog faeces deposited by that dog?

#### **Dogs on lead by order**

Do you think a person in charge of a dog must put the dog on a lead when requested to do so by an authorised officer?

#### **Dogs On Leads**

Do you think a person in charge of a dog on the land below must keep the dog on a lead in the following areas?

- Bowling greens
- Cemeteries and churchyards including green burial areas  
All footpaths around lakes and ponds
- All sports grounds, fields, parks and pitches but only when in use for officiated sporting matches
- City Park - BD25 redevelopment area

Where else do you consider dogs should be on leads?

#### **Exclusion**

Do you think a person in charge of a dog must not take it into or keep it within a:

- Fenced /enclosed children's play area?



- Multi-use Games Area's?
- BMX and skate parks?
- Interactive water features?
- Muslim sections of cemeteries?

### About you

Do you own or regularly take a dog(s) for a walk in the Bradford district?

What is your postcode? *for example BD18 7HJ.*

Please use the space below for any other comments you would like to make about this survey.

Thank you for completing this survey.

Please click 'Submit' to forward your responses.

## PSPO 2024 - Dog Control Order

This report was generated on 11/03/24. Overall 113 respondents completed this questionnaire. The report has been filtered to show the responses for 'All Respondents'.

The following charts are restricted to the top 12 codes.

**Do you think a person in charge of a dog must put the dog on a lead when requested to do so by an authorised officer?**

---

Yes (108) 95.6%  
No (5) 4.4%

**Do you think a person in charge of a dog on the land below must keep the dog on a lead in the following areas? (Cemeteries and churchyards including green burial areas).**

---

Yes (104) 92.0%  
No (9) 8.0%

**Do you think a person in charge of a dog on the land below must keep the dog on a lead in the following areas? (All footpaths around lakes and ponds).**

---

Yes (81) 72.3%  
No (31) 27.7%

**Do you think a person in charge of a dog on the land below must keep the dog on a lead in the following areas? (All sports grounds, fields, parks and pitches but only when in use for officiated sporting matches).**

---

Yes (109) 97.3%  
No (3) 2.7%

**Do you think a person in charge of a dog on the land below must keep the dog on a lead in the following areas? (All bowling greens).**

---

Yes (106) 94.6%

---

No (6) 5.4%

**Do you think a person in charge of a dog on the land below must keep the dog on a lead in the following areas? (City Park).**

---

Yes (90) 84.1%

No (17) 15.9%

**Do you think a person in charge of a dog should not take it into or keep it in: (A fenced / enclosed children's play area?).**

---

Yes (99) 88.4%

No (13) 11.6%

**Do you think a person in charge of a dog should not take it into or keep it in: (Multi-use Games Area's?).**

---

Yes (99) 88.4%

No (13) 11.6%

**Do you think a person in charge of a dog should not take it into or keep it in: (BMX and skate parks?).**

---

Yes (99) 88.4%

No (13) 11.6%

**Do you think a person in charge of a dog should not take it into or keep it in: (Interactive water features?).**

---

Yes (93) 83.8%

No (18) 16.2%

**Do you think a person in charge of a dog should not take it into or keep it in: (Muslim sections of cemeteries?).**

---

Yes (85) 81.0%

No (20) 19.0%

**Do you think a person in charge of a dog must remove the faeces from any public open space across Bradford district?**

---

Yes (112) 99.1%

No (1) 0.9%

**Do you agree that a person in charge of a dog must have and produce on request the appropriate means to pick up (eg a bag) dog faeces deposited by that dog?**

---

Yes (105) 93.8%

No (7) 6.3%

## Do you own or regularly take a dog(s) for a walk in the Bradford district?

No (63) 55.8%

Yes (50) 44.2%

The wards represented are shown below:

Ward	Count
BAILDON	8
BINGLEY	3
BINGLEY RURAL	2
BOLTON & UNDERCLIFFE	5
BOWLING & BARKEREND	3
BRADFORD MOOR	1
CITY	2
CLAYTON & FAIRWEATHER GREEN	3
CRAVEN	4
ECCLESHILL	1
HALIFAX	1
HEATON	3
IDLE & THACKLEY	5
ILKLEY	13
KEIGHLEY CENTRAL	2
KEIGHLEY EAST	5
KEIGHLEY WEST	5
QUEENSBURY	1
ROYDS	1
SHIPLEY	14
THORNTON & ALLERTON	2
TOLLER	4
TONG	1
WHARFEDALE	12
WIBSEY Count	1
WINDHILL & WROSE	2
WORTH VALLEY	3
WYKE	3
<b>Total</b>	<b>110</b>

## Appendix B - Survey response to Question 3 - suggestions where dogs should be on leads.

### Where else do you consider dogs should be on leads?

NONE

Around schools, children's playgrounds, farm animals.

Everywhere.

By farmland. I just generally think that they ought to be on leads as much as possible really - I can think of countless instances of dogs bounding up to me and my family and jumping up / scaring us.

On the street, where there is a public road. Near schools.

All public spaces.

Anywhere near livestock.

All footpaths.

Any area where there is livestock either on open moorland or fields crossed by public footpaths. In the winter sheep are often pregnant with lambs and, if chased, can abort the lambs causing distress to the sheep and financial loss to the farmer. Cattle in a field can also be disturbed when dogs are allowed to run loose so it is safer for all concerned to keep dogs under control.

Public footpaths by busy roadways.

On public footpaths near the roadside.

Town centres and very busy public spaces.

east morton rec.

All public places.

all parks and open spaces; as some parks are designated lead only so those not so designated are inundated by dog owners and dogs running all over the place, barking, jumping, destroying any peaceful walks and massively affecting wildlife. There are so many dogs who are not trained and not under anyone control that it is frightening.

Childrens play areas, anywhere with livestock, moorland during ground nesting birds breeding season.

Residential areas.

Canal paths, especially those that are cycle routes.

In built up areas & where there are children play areas, schools & other children/older people areas.

In any space where they might hinder pedestrians/joggers. On West Holmes Field in Ilkley on one occasion I was literally knocked off my feet by a large, out-of-control, dog. The people it was with were not at all concerned. When cycling in Ilkley, on several occasions dogs have come after me, barking.

Around children & elderly.

In all other public spaces so that they do not cause a nuisance.

Around any livestock.

On any public highway/road/path.

Whenever they are let out to foul. A neighbour let their dog out of their front door at 10pm every night to foul, even though they have a back garden. They did this knowing that it fouled on my garden every night. The situation is now resolved but it was the equivalent of being harassed every day. I also think a dog should always be on a lead when walking on any public footpath or road.

Near schools & Nurseries.

Dogs should be on a lead in any public place, 'aggressive' dogs should be muzzled.

Ilkley moor.

On sports fields when they are not in use.

Anywhere where the public are able to roam freely.

Public footpaths and amenity areas.

Some dogs are bulletproof some are not we should be going for the irresponsible owners.

When anyone asks them to, and when they are not in complete control of the dog.

Any public space which is busy.

On streets in residential areas.

All public parks, spaces and public footpaths.

Near all roads where bicycles, motor vehicles are present Shay Green crematoria around all school and college areas.

Canal towpaths. Children's playground.

Public footpaths & they should have to clean up after their dogs.

Where there are horses sheep and cattle.

I can't think of anywhere other than on the street/ highway.

On public footpaths, alongside roads, in built-up areas. Also in parks and public green spaces if the dog has little or no recall ability, or basic discipline.

All parks, all urban footpaths.

On pavements along A roads Near primary schools when children are arriving/leaving schools.

Dogs should be on leads everywhere at ALL times. Extended leads give sufficient range.

All pavements on public roads. If a dog does not respond immediately to a dog owner recalling it by name or by command, the dog owner must keep the dog on a lead. Outside schools, shops. Anywhere where there are runners or walkers or riders.

All public places, including, canal towpaths and footpaths in parks etc.

School fields, when requested to do so by a member of the public who may have a fear of dogs or have a dog of their own on a lead who may react to being approached

By any road.

Nowhere, dogs need exercise.

Where there are roads, children and animals.

Where not under control.

In public / pedestrianised areas. There are individuals who are fearful of dogs, but dogs also need picking after.

On all pavements, Childrens play areas.

Shops, pubs, cafes, public transport, outside schools at specific times when children are coming and going, busy streets ie with a lot of traffic and/or pedestrians. Paths leading to and from children's playgrounds.

Roads & urban commons.

All sports grounds, fields, parks and pitches but only when in use for officiated sporting matches : NO! All the time. Reduce the dog poo, and the risk to sports players and non-owners of dogs who go for recreation not for dog fouling on their shoes, clothes, hands, walking sticks . . . All bowling greens : Is there any need to ask this question? Have you played bowls on a green that's got dog poo it? City Park - BD25 redevelopment area : I don't know what this means. The postcodes only go as far as BD24. Of course dogs should be on leads in City Park. They'd get in the way of cycles, and pushchairs, and walking frames. In spite of budget cuts can the Council abrogate its responsibility to maintain reasonable social contact in public places? Dog walkers on pavements in built-up areas need to use dog leads : built-up, as in street lamps 200 m or less apart. Have you read the Facebook pages about dog fouling, and how disgusting it is for people who have to see it every day, and have to pick it up when it's not their dog's? So we're left with moorland, fields of friendly farmers, back gardens, dog toilet areas, and dog exercise areas.

Dogs should be kept on leads at ALL times unless in their are in the boundaries of their own home.

Everywhere that is not private land where the owner has given consent. Areas where there a lot of children and infants.

On public transport.

Town/city centres, public pavements, public streets anywhere that's not private land or a public park.

On public highways. I've seen many dogs being walked on busy roads, off lead.

Around people especially where the dogs are large and seemingly under lack of control.

All public places including footpaths, pavements and parks. Woods and the countryside, particularly in light of recent sheep attacks. It's good to provide an area ie a field to enable the public to exercise their dog.

---

Areas around and approaching cafes. This includes any area that has picnic tables (permanent or temporary). Unfenced play areas (around and 'inside' what an average person would perceive to be the footprint of the entire play area).

---

Children's play areas. Areas where there are farm animals, Cows, Sheep etc.

---

At all times. On pavements and any public area.

---

In/adjacent to children's playgrounds.

---

All public spaces that are not designated dog walking fields.

---

Children's play areas, public footpaths, near water.

---

Any public space.

---

Any public place.

---

Ilkley moor.

---

Near schools (especially primary).

---

Near playgrounds or schools.

---

Peel park bmx track - or better still keep them off!

---

Public footpaths.

---

Only where overspending traffic causes a danger to the dogs.

---

Pavements in towns and villages main roads.

---

Shared paths with cyclists and horses. Rule 56 of the Highway Code makes it clear dogs must be on a short lead on shared paths but there is zero enforcement. The situation is made worse by commercial dog walkers with a large number of dogs in tow and not on leads.

---

**PUBLIC PARKS, WHEN BEING TAKEN FOR A WALK, WHEN CHILDREN ARE AROUND AS NOT EVERYONE LIKES / TAKES TO DOGS.**

---

Anywhere that has a public footpath. So all parks, streets and roads. Dogs off lead should only be allowed "off road" in places like fields, wooded areas etc.

Dogs should be on leads all the time except in designated dog spaces.

---

Recreational areas such as West Park, streets except those which rarely carry vehicles, farmland except land free of livestock.

---

On footpaths along roads.

---

Near playgrounds on streets around schools.

---

Anywhere near children playing.

---

Pavements and public footpaths Along the canal path.

---

In all designated sports areas irrespective of whether in use or not. The BMX track is used by owners to exercise their dogs and this is not suitable use of the site.

## Appendix C - Survey responses to Question 5 - suggestions where dogs should be excluded.

Which, if any, other areas within Bradford do you feel dogs should be excluded?

None.

All cemeteries. School grounds.

Parks.

Cafes and shops - I'm very disappointed in the growth of dog-friendly cafes.

Not sure, where they could cause or experience difficulty.

All public recreational areas.

Shops and cafes.

Don't know.

No, any area should be fine for any well behaved dog on a lead, the only place I'd reasonably consider is areas like where very young children play.

None.

All areas where people are walking or areas where children are playing and agricultural areas where farm livestock are kept or grazing.

town centres, and places like Harden Moor where the sheer amount of professional dog walkers means its a no go for anyone else.

None.

Public spaces. It would be helpful if BMDC set up "dog runs", where dogs could be let loose in an enclosed space, as done in some other cities.

From main footpaths which I have found to be fouled by dogs. Some people do not care about cleaning up after their dog.

Dog should not be excluded from any areas. Parks, all areas of cemeteries and other public spaces should allow dogs on a lead with their owner.

I'm just curious why you specifically asked about Muslim areas of cemeteries. Dogs shouldn't be in any cemetery, unless they remain on a footpath, irrespective of religion.

Any cemetery or memorial garden/place.

None.

In previous question not asked about with or without a lead so unclear whether asking about absolute ban so didn't answer.

School grounds.

around schools and colleges crematoria.

All cemeteries.

Enclosed park areas, if they are there if a parent owns a dog. The dogs should be on a lead at all times.

can't think of any.

Footpaths where the owners do not pick up their dog's faeces.

Bowling greens and other sports areas, not just when in use.

Restaurants and Cafes serving food. All Play Areas.

Farmyards. Owners must be prohibited from walking through farm yards with dogs.

Park land where children play games, sports.

None.

Grounds of hospitals and health care facilities, and schools.

None.

All cemeteries, all public places unless secure and not a threat to wildlife and people, and easy to pick

up after.

Urban commons.

All cemeteries.

Dogs shouldn't be excluded from being anywhere. The issue is dogs not being on leads at all times unless in area that is built and run for the use for dogs off lead.

Possibly the main shopping area. I have seen a few people strutting around with 'trophy dogs' which can be trained to be aggressive. Also the market.

Public transportation as had a few times where I've had to get off bus/train due to someone bringing a dog on board.

None.

Ilkley moor when sheep are present and when nesting birds are present.

Cannot think of anywhere that is not already mentioned in previous questions.

None that I can think of if on lead.

All cemeteries - not just Muslim areas.

Cafes and restaurants.

None.

IF IN TOWN CENTRE SHOULD BE ON LEADS.

Only places that have other animals present. Should follow the rules of Leeds City Council.

Dogs should be kept in ones home, when walking, on a leash and only in designated dog spaces.

School fields.

I do think that the previous question is poorly worded and dogs should not be allowed in those places. Also no dogs on school premises.

Any fenced in children's playground.

Greenways and running/walking/cycling paths. Dogs wander in front of runners etc causing obstruction and near accidents.



## Appendix D Survey Response General Comments

Please use the space below for any other comments you would like to make about this survey:

Thanks.

People who fail to pick the faeces of a dog they are with should be fined massively.

Dogs are a great asset if they are happy and well cared for. I think dog walkers should have a limit on how many dogs they can have at a time ( this may already be in place) . More bins available for dog poo . Good luck.

Several times every day dogs are allowed to poo and wee at the entrance to our drive. It's disgusting and disrespectful. They should be directed to a grass verge or similar.

People often have a very blurred view of dog care, ownership and responsibility. Many seem to think it ok to allow their dogs to defecate on open grassed areas without cleaning this up. Wrong attitude since dog faeces build up causing flies and potential disease especially where the area is popular and dogs naturally defecate where others have already been.

I absolutely do not agree with demanding that dog walkers show proof of dog poop bags, if I encountered this I would absolutely not comply and if I was forced to comply I would take legal action against the council.

Responsible dog owners should be able to walk their dogs off lead in safe areas away from the road, providing their dogs are under control. If their dog is reactive they should be kept on their lead. All dog owners, should pick up after their dogs particularly on general footpaths. Where we live it is particularly disgusting as many people don't pick up at all.

Dogs are a traditional way of British Life and we should encourage the good values that people have for their dogs we should remember it's never the dog only the irresponsible owners that are the real culprits.

There is lots of poo and poo filled poo bags left / dumped up green end road and upwood lane and lakeside in east morton bins could be provided instead of them throwing there poo bags in my garden or not picking up there poo from my garden or anywhere else on the roads its disgusting there is loads of it. as a dog owner i always have loads of poo bags and always pick up the poo but im sick of having to pick other dogs poos up too.

There is too much leaniancy in regards to dogs and dog owners. They do not keep them under control in public places. They allow them to run around in parks and play spaces where signs state they should be on a lead and then they wonder when the animal goes for someone they are approached.

professional dig walkers - the sheer number of them in parks and open spaces is scary and often means that there are many dog running around especially when they join with another walker and there are 12 dogs, that the walker cannot keep an eye on them all so don't pick up faeces.

A particular problem of dog fouling in Central Park, Shipley. This space would be great for outdoor events but is not usable at present because of dog faeces.

The small pool area at the junction of Crossbeck Road and Wells road should not be a dog exclusion zone. It should be accessible to dog walkers with dogs on a lead.

Re dog faeces, if dog owners were required to register dogs (if they are not already) and provide faeces sample for DNA testing, errant owners could be traced. Many dog owners seem, wrongly, to assume that everyone is untroubled by wayward animals - in my case, this is not at all so. The old system of dog licences should be reinstated, and prospective/new owners required to attend training courses. It would also provide some revenue.

There is a dog fouling problem in the BD8, mainly around Girington & Allerton. I run in these areas a lot & it's getting worse.

Why is it that poorer areas of Keighley do not have regular Dog Patrol Wardens on duty?

For the purposes of this consultation I would like to point out that with regards dogs the issues below are the main if not the only problems with dogs in this area. Dog fouling (an epidemic) Dogs being allowed to run out of control/wander.

See earlier comment.

Most dog owners are responsible people most of the time, and dogs needs to be exercised. Bradford

Met needs to ensure that there are spaces available for dog exercising, with adequate facilities - dog owners pay Council Tax, and should be granted access to such spaces, just as they and their pets are restricted in other spaces. It cannot be a one-sided set of rights.

It's difficult to walk anywhere, rural or urban, and not find dog mess. Dogs should not be allowed to run free in any public places.

Do not know why the word Muslims came up!

#### THE COUNCIL SHOULD PROVIDE OR REQUIRE LOCAL GROUPS SUPPORTED BY COUNCIL FUNDS TO PROVIDE SUITABLE BINS FOR THE DISPOSAL OF DOG EXCREMENT.

I have no issues with dog that are well trained, but to off the lead they should have to have a permit on a lanyard, as long as person picks up after the dogs doing it's business.

Most dog owners are responsible owners. It's the same lazy owners who don't pick up the faeces.

I go for a walk close to my home BD22 6NE most mornings and find dog mess every day. There is a bin at the end of the road which is used by the majority of dog owners some whom I walk with but the minority do not pick up there dog mess. It is particularly bad when the darker nights start and is also particularly bad on public footpath Keighley no.18. I've had it inside and outside of my drive and other neighbours regularly pick it up from the street. Unfortunately it isn't done in the daylight where you can see someone so cannot be challenged.

This is welcomed, whilst most people clear up after their dogs there is still a proportion who don't and cracking down on this is important. whilst i like having my dogs off their leads, i like to think i am a responsible dog owner and will abide by any further restrictions if they are introduced.

Irresponsible dog owners need educating. If they fail to learn and comply then the dog could be confiscated temporarily/an on the spot fine issued.

I live in Utley and there is not one single bin for dog poo, only a bin outside green head lane school. More dog poo bins I do not go tocliffe castle park with my dog because other people with dogs out of control let their dogs off. I have been almost assaulted by a dog owner with a husky for pushing it off my person as it stood with it's paws on my chest. He said I was scaring his dog!!

The penalties for allowing dogs to foul public places should be higher. It is a shame that the council's financial situation means that no more dog wardens can be employed, as there is no real deterrent.

All dog walkers should carry a means of "poo" disposal, with this monitored. We need to see far more prosecutions for dog fouling and dogs freely running around.

Although most dog owners/walkers are responsible and considerate, there is evidence of dog feces on footpaths in my area. And I would support increased sanctions and penalties for offenders.

Those authorised to enforce these regulations should be trained to apply some discretion and common sense when dealing with members of the public. They should apply the regulations evenly to ALL members of the community (not just those who are perceived to be an 'easy' target, non-confrontational and entirely compliant and contrite. The officers should adopt an initial approach to Engage, Explain, Encourage and ultimately, where non-compliance and / or recalcitrance is encountered, enforce the regulation. Implementation of the proposed measures should be entirely about educating the public and resorting to issuing enforcement fines as a last resort, not as a blunt tool to extract money from the public to bolster the council coffers. Patrols should focus in 'hot spot' areas and at times likely to encounter offending, often linked to other areas of anti-social behaviour – don't just pick on 'middle class' leafy suburbs and issue tickets in a discriminatory fashion to busy people who make a positive contribution to the local community and society as a whole just because they came out wearing the wrong jacket and left their dog faeces bags in the other one or are caught with their dog off a lead without any aggravating factors and comply with an instruction to put their dog on a lead when a reasonable request is made. What is going to be the definition of 'suitable means to immediately remove dog faeces' ? a plastic bag, a paper tissue, a scoop, a gloved hand ? who determines whether ALL the faeces has been removed ? What will happen in circumstances where a dog is suffering from diarrhoea or deposits a slightly sloppy stool ? This may present a significant challenge for dog owners to remove all traces of the offending faeces in an effort to comply with an instruction by an officer. In what timeframe must the person remove faeces ? Dog walkers often walk their dogs within a few hundred yards of their home so will they be permitted to return home to collect a poo bag or request the same from a passerby ? What if the person produces a bag which then transpires to be defective or if the amount of faeces is too voluminous to fit in the bag? In the absence of clarity and specific definition regarding the above observations, and if 'overzealous' officers do not receive adequate training regarding the necessity to interact with the public positively and engagingly, demonstrating some restraint, dogs may not be the only ones who should be put on a leash !

It should be easier to report irresponsible dog owners. I've tried to find out how to do it a couple of times and it was impossible.

---

Dogs need spaces to exercise and run freely.

---

I think the dog owners should take more responsibility to pick up the dog poo. In Burley I think we do have a problem with it, but the questions in this survey make me realise that the city centre also has different problems relating to it. How disgusting that you have to ask about dogs going into cemeteries. Locally when I see someone picking up the poo I usually thank them for doing so. One of the problems we have locally is people taking their dog for a walk with their mobility scooter, so then not being able to pick up the poo. Disabled people do have the right to own a dog but if they can't clear up after it, that is not good. We have a stock of poo bags so if any is left on the pavement near our house, we can pick it up. I don't like to do this but it is better than leaving it around.

---

Survey not very well worded. Should have had some n/a options e.g first question. Generically faeces are an issue in my area. I have three dogs that get walked three times a day and I always pick up but there are an increasing number of people who do not. A lot of times those are when they take dogs late at night, but not exclusively. Some people are also not aware that a dog has every right to toilet on a pavement as long as it is picked up. Need more/better signage.

---

We need proactive and reactive fines, and tough action on those who don't pick up after their dogs, those who litter and those who do not have their dogs under control.

---

I think well behaved dogs and owners should not be too restricted because of the legitimate fears people have about badly behaved dogs with inadequately skilful owners. I'd like to see a registration scheme reintroduced nationally with a mandatory basic training requirement and more demanding training for owners of larger and potentially more dangerous dogs, and some people, based on their behaviour banned from dog ownership. I think this would work a lot better than the dangerous dogs act we currently have. On the whole I think this proposed order is well balanced, but could be better enforced if you (Bradford MDC) were sufficiently resourced.

---

Household pets such as dogs have a disproportionately negative impact on the environment and wildlife, particularly ground, nesting birds. The situation is slightly relieved by making the use of short leads compulsory under all circumstances. In addition, as largely being meat-eating they contribute to global warming.

---

No-one will respond to notices about dog-fouling, dogs on leads, and notices about fines, unless a Council officer appears and carries through the process and issues a fine. Mistreated dogs need the Dog Warden. It's unfortunate that since the COVID-19 pandemic many more people have dogs than before, and the Council budgets have been cut year on year. However, for reasonable social interaction and reasonable standards on the street, Dog Wardens and the active issuing of fines are necessary. Perhaps a campaign about "A Dog is for Life, not just for Show" would be helpful for a year or two until the message gets through.

---

Authorities should not have the right to force you to put a dog on lead as all dogs should be on leads full stop for a number of reasons including the Safety of the animal itself. I never have mine off lead in case they get spooked and bolt as well as dog theft.

---

Being allergic to dogs public spaces can be a really pain to get through when a dog is off lead you have to go somewhere away from them or wait for the owner to pass. Seen a few XL bully's in town being walked no lead and no muzzle which is now illegal but nothing happens and the owners do this often.

---

I note that Bradford Council are not adding any more litter bins and that the canal and river trust have removed litter bins and these have not been replaced - dog poo is being left where the bins used to be - I would suggest that dog fouling and leaving of dog poo within poo bags will be exasperated with the lack of litter bins provision and we will revert back 50 years to a point when dog poo was everywhere. - give the dog owners opportunity to pick it up and dispose of it within ample bins supplied. More bins equals more poo picked up. Additionally you must protest that you even think a dog warden or community warden has the power to "Stop and Search" they do not - only a police officer has this power and only when specific criteria are met - you are setting yourself up for a very large fall and legal claims if you pursue this action.

---

The pavements around Ilkley are getting covered in dog s--t and so many of the owners don't seem to care.

---

As mentioned before a dedicated space for dog exercising is always well received by dog walkers, particularly when opportunities for exercise are not very limited. People love their dogs and so a

dedicated area would be useful.

The survey should have included a question about the maximum number of dogs a person should be in control of during the course of a single walk, and that this number cannot be exceeded.

There should be tighter measures for out of control dogs. Maybe have some designated areas for dogs? Also, more control over people putting food out in park areas. Including, bread, contents of takeaways, rice, chapatis, all of which are a danger to dogs and wildlife. As well as attracting vermin. It has to work both ways. Dog owners have as much right to use public spaces as the rest of the community without risk. My dog was recently very ill after ingesting debris left under a tree.

I think there should be designated areas e.g. in a park where dogs are allowed off their leads and the rest of the area they should be on a lead. This needs to be enforceable and carry fines.

We go to Peel Park often. It is very scary when a dog not on a lead bounds up to you - even when the owner tells you they are very friendly.

Dog poo in Burley is a massive problem. More so post covid pandemic. Also the surrounding fields and moors. In fields/semi rural areas people are even worse at picking up-but massive piles are also left on pavements in the village. People seem to think if dogs are off a lead and they (owners) don't see the dog relieving itself-usually as they are on a phone-then it's not their fault if they miss/don't pick up a poo. More signs and perhaps on the spot fines/harsher penalties should be issued or at least means for members of the public to easily report/submit photos of repeat offenders-dogs and their owners often follow the same route! Something definitely needs to be done.

We regularly use Bradford Bandits BMX track and have to constantly pick up dog faeces prior to training.

Thornaby Drive Clayton Bradford West. BD146EH. Please can this be included. massive issue of dogs been let into the play area and also dog fouling is an issue in that little park.

We walk our dog around our home town of Baildon most days. Unfortunately there has been an increase in dog dirt around the streets. This is unacceptable, and there should really be no excuse for this.

The vast majority of dog owners control their dogs extremely well mainly only removing the leads in the moor areas.

How will this be policed as in my area dog mess on the pavements outside people's houses is a big problem already despite warning signs of prosecution.

Dog owners should be responsible, have dogs on leads, not let dogs jump onto passer bys, pick up faeces, there should be more bins for this too.

As a dog owner who has owned dogs with "issues", walking a dog is almost impossible because of the number of dog owners who just let their dogs off lead with no recall or consideration for others. Not every dog is friendly and at the end of the day, a dog is a dog!! They can be unpredictable and reactive. If every dog was on a lead, then no dogs would go missing, be attacked etc. Too many people out there who think their dog is friendly so it's fine for it to run up to other dogs. Not every dog wants to play with other dogs. So if you see a dog on a lead, especially one that says "no dogs". Then a dog doesn't want to be approached by a dog off the lead. Having dogs off lead, doesn't give you the flexibility to move out of the way to avoid another dog. The only way to properly control a dog, is to have it on a lead. If owners want to let their dogs run off for exercise, then they should book a dog field as there's plenty about these days.

Dog bins have been removed from public footpaths and parks. I don't disagree, but why are we allowing dogs to walk where we can't dispose of faeces.

More signage needs to be erected. CCTV needs to be installed in repeat offence areas. Fouling should be analysed to identify the breed. Fines should be increased to finance the above measures.

Too many signs in Bowling Cemetery near the Muslim section; all rules should be applied in all areas of cemeteries. 8 signs too many.

Also no one should be allowed to train dogs in any public park. Can this be added?

Just reiterate dog fouling around where children play and far more proactively for loose dogs to be apprehended. Shopping centres only for support dogs as crowds can scare.

I think it needs to be made very clear to dog owners that simply bagging the faeces and leaving the bag on the ground or hanging from a tree is not sufficient. That action should be fined as well. I don't think this is clear enough in this document or on signs. I am stunned by how many discarded or hanging bags I see when I am out walking. This is not acceptable.

---

My child is very scared of dogs - going along the canal it can be dangerous if a dog approaches off a lead as there is nowhere for my child to stand where they feel safe.

---

I would like to see more visible park rangers across the district as well as volunteers in the park supporting appropriate use of the facilities.

## Appendix E – Consultee Comments

Name and address of Consultee	Date consultation sent	Method of consultation i.e. Email, Letter, face to face	Date Returned	In Favour Yes or No	Comments made
Local Elected members	24.02.2024	Emails from Ward Officers	Various	Broadly - Yes	See below

### **Cllr Hazel Johnson**

I'm very pleased to hear about the new Public Space Protection Order, Dogs and Dog Control 2024, however would also like to strongly recommend that Horton Bank Country Park, Great Horton Road BD7, Westwood Park & cricket pitch, Stocks Lane BD13 /Skylark Avenue BD6, Littlemoor (Foster) Park, Park Lane BD13, Foxhill Park and Queensbury ARLFC, both on Brighouse & Denholme Road, BD13 and Moor Close Avenue, BD13 are all added to the list.

Dog fouling is a huge problem in Queensbury Ward, and surely if all green spaces were covered by Dog Control Orders this would show a consistent approach and minimise confusion for residents. (Queensbury colleagues, please add in any more areas I may have inadvertently overlooked.

**Action: The areas suggested by Cllr Johnson have either been specifically added to the PSPO or are covered by the general restriction and prohibition.**

### **Cllr Simon Cunningham**

As Ward Councillor for Bolton and Undercliffe I am writing to offer representations on the current review of the above order, specifically relating to its impact on Peel Park.

Since the order was first implemented in 2020, volunteers and custodians of Peel Park have expressed concern that the order is not sufficiently robust enough to guarantee the safety and enjoyment of all park users. In October 2020, the Regulatory and Appeals committee received a report containing substantial concerns and recommendations of the Friends of Peel Park group, but unfortunately, I feel these concerns were not adequately addressed. Therefore, as part of this review, I urge you to look again in detail at what was requested in 2020 and seek to implement the recommendations. I fully endorse the recommendations made by the group.

I would also like to clarify if the Friends of Peel Park will be formally consulted on this review, as it's my opinion that the online survey does not provide adequate space for meaningful representations. The group has collected, and continues to collect, an anonymised log of dog-related incidents in Peel Park and I think it's important that this log is considered as part of the review.

In short, as part of this review, I am requesting that officers look at implementing stronger and more targeted controls for Peel Park, to be drawn up in consultation with Friends of Peel Park. I would also like to add that requests for signage and enforcement notices have not been previously headed to under the previous order, so I would state that any new or reviewed order is supported by sufficient resource to properly advertise and enforce it.

Yours sincerely,  
Cllr Simon Cunningham  
Ward Member for Bolton and Undercliffe

### **Action/Response:**

Dear Councillor Cunningham

Thank you for your letter of representation which I acknowledge.

Dog Control Orders were introduced in Peel Park in 2010/2011. In 2017 Dog Control Orders were replaced by Public Space Protection Orders and in 2020 a public consultation was undertaken as part of a legal requirement to extend the existing Public Space Protection Orders.

During the last public consultation in 2020 we did receive representations from the Friends of Peel Park requesting that the whole park be designated a dog on lead area. Equally we received strong representations from other members of the public that wanted areas within the park where dogs could be left off leads so that they could exercise their dogs.

The Regulatory and Appeals committee decided that the existing restrictions and prohibitions contained within the Dog Control PSPO would remain the same but decided to add the following prohibitions and restrictions across the district:

- (a) Dogs to be kept on leads around all sports grounds, fields, parks, and pitches, but only when in use for organised authorised events;
  - (b) Dogs to be kept on leads on footpaths around lakes and ponds;
  - (c) Persons in charge of dogs be required to carry a receptacle to remove dog faeces;
- Other district wide restrictions in the existing Dog Control PSPO include:
- (i) remove all dog faeces deposited by the dog(s) from the land forthwith.
  - (ii) To comply with a direction given to him/her by an authorised officer of the Council to put and keep the dog on a lead.

It is important that any restrictions and prohibitions introduced at Peel Park are proportionate and balanced to account for all Park users and the Committee was satisfied that the existing dog control measures at Peel Park were sufficient to deal with the issues raised by the Friends of Peel Park.

Ward Officers from Bradford East Area Coordinators have had regularly contact with Friends of Peel Park in relation to dog fouling problems and Neighbourhood Wardens regularly Patrol Peel Park to enforce the conditions within the Dog Control PSPO.

The effectiveness of any PSPO depends on the ability to enforce any offences and moving forward the Environmental Enforcement Team will have a number of Neighbourhood Wardens focussing their work specifically at environmental problems affecting our neighbourhoods. We will ensure regular weekly patrols are undertaken to engage and educate the public, and if necessary, enforce dog control offences by issuing fixed penalty fines at areas where breaches of the PSPO are identified. In addition, we will undertake a review of all signage across Peel Park and place additional signage where required to increase public awareness. Our Neighbourhood Wardens can work with the Friends of Peel Park to achieve this.

I am confident that the above-mentioned actions will help to change behaviours and promote responsible dog ownership at Peel Park and I will ensure that your letter of representation is included as part of the consultation response.

**Additional Information From: Jessica Mallison**

Hi Simon,

In addition to the below comments from Amjad regarding the PSPO order in Peel Park.

We are starting a project at the Hub that is aimed at dog owners/walkers. This will provide us with a great opportunity to engage with people and echo the need for responsible dog ownership.

As you know, FoPP are in the process of making some dispensers for dog bags to be placed around the park. Myrtle's log would be a great way to identify key locations for these dispensers.

I am more than happy to design a poster that can be displayed on the notice board highlighting where these dispensers can be found.

With the above in mind and Amjad's assurance that there will be weekly patrols to enforce the PSPO, I am quite hopeful/positive that we should see a reduction in dog fouling and any other related dog incidents.

Thanks

Jess

**Cllr Andrew Loy**

I strongly support the renewal of this PSPO and the proposed amendments. Dog fouling may be a relatively low-level issue, but it can have a significant impact on some areas. The PSPO has been particularly useful in combating the issue in Ilkley cemetery.

My only comment on the proposed order is that in Article 5 - dog exclusion areas, Byre Lane/Wheatlands is listed as being in Ilkley ward, which it is not. I think it may possibly be in Keighley West.

Kind regards,

Andrew

**Action: Areas changed in the PSPO.**

Richard Padwell T/Chief Superintendent Bradford District Commander West Yorkshire Police	24.02.2024	Information by Email	02.04.24	Yes	See below
--	------------	-------------------------	----------	-----	-----------

**Comments –**

As Temporary District Commander for Bradford District can I thank you for your email as part of your consultation on the review of the current Public Space Protection Order in relation to Dog Control.

The majority of dog owners in the District are responsible and ensure they walk their dogs in a safe and controlled manner including picking up waste. Therefore, whilst this order is not required for them, there are a small minority of

irresponsible dog owners who do not show the same levels responsibility.

It is crucial our community feel safe in all our green spaces and a ban on dogs in play areas, sporting fields and cemeteries is proportionate. This order has been in place for a number of years, and I am informed from yourself that calls to the local authority in relation to nuisance related to dogs have reduced during the term of this order.

I support our local authority colleagues having this additional power to enforce this public space protection, when the conditions are breached.

I therefore welcome and support this application.

<b>Police and Crime Commissioner</b>	24.02.24	Information by Email	None		
--------------------------------------	----------	----------------------	------	--	--

**Comments –**  
None

Danny Jackson Countryside and Rights of Way Manager	24.02.24	Information by Email	26.02.24	Yes	See below
--	----------	----------------------	----------	-----	-----------

**Danny Jackson (Countryside and Rights of Way)**

Thanks for circulating this draft Order – I'll have a look and get back to you re: updates.

I do wonder whether, as part of this renewal/review, consideration could be given to commercial dog walking businesses that are using Council owned land. This has been an issue on a number of our sites and we had been asked to consider some kind of licencing/registration scheme – although this is proving difficult to progress . The issues of concern are large numbers of dogs under one persons “control” in public spaces – which can be intimidating and has resulted in attacks. On our moorland sites these numbers of dogs are let off the lead all at once and cause significant disturbance to our protected moorland ground-nesting birds during the breeding season (March – July) and we are also sceptical about the handlers ability/inclination to pick up the dog mess from such large numbers of scattered dogs. We have witnessed them not bothering or not being aware on numerous occasions.

PSPO route might give us more control on this business use of our land - in particular by limiting the numbers of dogs being walked at any one time (I understand that Leeds have done this) and by requiring dogs to be kept on a lead at certain sites at certain times of year.

Do you think this is possible via the PSPO? If there is an Enforcement resource issue, my team have been prepared in the past to train up and take this on for our sites - this still applies.

**Second Email**

Just further to our recent conversation about the renewal of the Dog Control PSPO and some site-specific concerns I have, by way of a reminder we agreed that:

- The current review/renewal goes ahead without alterations
- Once the dust has settled (hopefully not too long) we can look at a “variation” to add to the PSPO
- This would bring in site specific (not District – wide) requirements for dogs to be kept on leads during nesting season in order to reduce disturbance of legally protected ground nesting bird species
- The sites would include our main moorland areas (Ilkley Moor, Baildon Moor, Harden Moor, Penistone Hill)
- My team (Countryside and Rights of Way) would be willing to pick up some of the enforcement – even if not authorised to issue fixed penalty notices, they could forward information/names/vehicle registration numbers etc to your team for the issuing of notices
- This may require additional equipment and training – to be confirmed.

Hope that pretty much covers it – let me know when the time is right to pick up this conversation

Many thanks

Danny

**Action: This has not been included in the scope of this consultation. Need to collect further evidence to support this view. May look at further restriction on moorlands to some point in the future.**

Cemetery and Crematory Services – Antonio Smith	24.02.2024	Information by Email	27.02.2024	Yes	See below
---	------------	----------------------	------------	-----	-----------

Just a few things.



Can we add Shay Grange Crematorium to the list (Shay Grange Crematorium Long Lane Bradford West Yorkshire BD9 6ST)

Can we also add Bierley Crematorium Shetcliffe Lane Bradford to the list ( due to open in 15 months' time still don't have a postcode for the site)

Also, just a thought can we go out to consultation about excluding all dogs except for service / assistance dogs from all cemeteries and crematoria sites.

Having some exclusion zones is proving to be problematic for some users that say it is unfair to have limited areas excluded at these sites.

**Action: The areas suggested added to the PSPO. The other suggestions have not been included in the scope of this consultation. We need to collect further evidence to support this view. May look at further restriction at some point in the future.**

#### **Parish and Town Councils**

On the 27<sup>th</sup> February 2024 the Parish and Town Councils of Bradford were consulted on the planned public space protection order. This was done by email.

Shingley Town Council  
Bingley Town Council  
Cullingworth Village Council  
Denholme Town Council  
Wilsden Parish Council  
Harden Village Council  
Menston Parish Council  
Wrose Parish Council  
Burley Parish Council  
Baildon Town Council  
Addingham Parish Council  
Haworth, Cross Roads & Stanbury Parish Council  
Ilkley Town Council  
Keighley Town Council  
Oxenhope Village Council  
Sany Lane Parish Council  
Silden Town Council  
Steeton with Eastburn Parish Council  
Clayton Parish Council  
Bradford Trident Community Council

The background and consultation survey was sent to the representatives of the Parish Council's and generally these were well supported.

The following responses and feedback received

Cullingworth Village Council	24.02.2024	Email	18.03.24	Yes broadly	See below
------------------------------	------------	-------	----------	-------------	-----------

Dear PSPO Team  
Cullingworth Village Council would like to retain the two PSPO orders in the current list. We have recently added new equipment in the form of a Trim Trail. It's on the Recreation Ground but not in the same place as the playground equipment currently covered by the PSPO. Do we need an extra PSPO?  
I have attached a very rough sketch.

**The area suggested by Cullingworth Village Council is covered by the general restrictions and prohibitions. Signage will be added as appropriate.**

#### **Non Statutory Consultees**

##### **Friends of Groups**

All the friends of groups know to Bradford Council were consulted by email.

Manager Ben Rhydding Gravel Pits Local Nature Reserve  
Trustee Wharfedale Naturalists Society, Reg Charity No: 509241

##### **Steve Parkes (Manager Ben Rhydding Gravel Pits Local Nature Reserve Trustee Wharfedale Naturalists Society, Reg Charity No: 509241)**

Thanks for sending this. I would have thought we need to include Ben Rhydding Gravel Pits in the list of locations to make it enforceable regarding dogs on leads around ponds?

**Action: Area added to the proposed PSPO.**

## **The Dogs Trust**

Dear Environmental Health Team, thank you for inviting us to participate in your additional consultation on your proposed new Public Space Protection Orders for Bradford Metropolitan District Council. As the UK's largest dog welfare charity, we would like to make some comments for consideration. Dogs Trust's Comments

1. Re; Fouling of Land by Dogs Order: • Dogs Trust consider 'scooping the poop' to be an integral element of responsible dog ownership and would fully support a well-implemented order on fouling. We urge the Council to enforce any such order rigorously. In order to maximise compliance, we urge the Council to consider whether an adequate number of disposal points have been provided for responsible owners to use, to consider providing free disposal bags and to ensure that there is sufficient signage in place. • We question the effectiveness of issuing on-the-spot fines for not being in possession of a poo bag and whether this is practical to enforce.

2. Re; Dogs on Lead by Direction Order: • Dogs Trust enthusiastically support Dogs on Leads by Direction orders (for dogs that are considered to be out of control or causing alarm or distress to members of the public to be put on and kept on a lead when directed to do so by an authorised official). • We consider that this order is by far the most useful, other than the fouling order, because it allows enforcement officers to target the owners of dogs that are allowing them to cause a nuisance without restricting the responsible owner and their dog. As none of the other orders, less fouling, are likely to be effective without proper enforcement we would be content if the others were dropped in favour of this order.

3. Re; Dogs on Leads Order: Public Space Protection Order (Dog) Environmental Health Bradford Metropolitan District Council Public Space Protection Order Proposal - Dog. 11th March 2024 • Dogs Trust accept that there are some areas where it is desirable that dogs should be kept on a lead. • Dogs Trust would urge the Council to consider the Animal Welfare Act 2006 section 9 requirements (the 'duty of care') that include the dog's need to exhibit normal behaviour patterns – this includes the need for sufficient exercise including the need to run off lead in appropriate areas. Dog Control Orders should not restrict the ability of dog keepers to comply with the requirements of this Act. • The Council should ensure that there is an adequate number, and a variety of, well sign-posted areas locally for owners to exercise their dog off-lead.

4. Re; Dog Exclusion Order: • Dogs Trust accepts that there are some areas where it is desirable that dogs should be excluded, such as children's play areas, however we would recommend that exclusion areas are kept to a minimum and that, for enforcement reasons, they are restricted to enclosed areas. We would consider it more difficult to enforce an exclusion order in areas that lack clear boundaries. • Dogs Trust would highlight the need to provide plenty of signage to direct owners to alternative areas nearby in which to exercise dogs.

5. Re; Dog Exclusion and sport pitches • Excluding dogs from areas that are not enclosed could pose enforcement problems - we would consider it more difficult to enforce an exclusion order in areas that lack clear boundaries. • We feel that exclusion zones should be kept to a minimum, and that excluding dogs from all sports pitches for long stretches of the year is unnecessary. In some cases, sports pitches may account for a large part of the open space available in a public park, and therefore excluding dogs could significantly reduce available dog walking space for owners. • We would urge the Council to consider focusing its efforts on reducing dog fouling in these areas, rather than excluding dogs entirely, with adequate provision of bins and provision of free disposal bags. The PDSA's 'Paw Report 2018' found that 89% of veterinary professionals believe that the welfare of dogs will suffer if owners are banned from walking their dogs in public spaces such as parks and beaches, or if dogs are required to be kept on leads in these spaces. Their report also states that 78% of owners rely on these types of spaces to walk their dog. We believe that the vast majority of dog owners are responsible, and that the majority of dogs are well behaved. In recognition of this, we would encourage local authorities to exercise its power to issue Community Protection Notices, targeting irresponsible owners and proactively addressing anti-social behaviours. Dogs Trust works with local authorities across the UK to help promote responsible dog ownership.

Please do not hesitate to contact should you wish to discuss this matter.

We would be very grateful if you could inform us of the consultation outcome and subsequent decisions made in relation to the Public Space Protection Order.

Yours faithfully, Kevin Atkinson Hughes-Gandy Community Education & Engagement

**Action: Comments noted**

**BRADFORD METROPOLITAN DISTRICT COUNCIL  
ANTI-SOCIAL BEHAVIOUR, CRIME AND POLICING ACT 2014  
PUBLIC SPACES PROTECTION ORDER 2024 (DOG CONTROL)**

The City of Bradford Metropolitan District Council (in this Order called “the Council”) hereby makes the following Order pursuant to Section 59 of the Anti-social Behaviour, Crime and Policing Act 2014 (“the Act”).

The Order may be cited as the “Bradford Metropolitan District Council Composite Public Spaces Protection Order 2024 (Dog Control)”.

When in force this Order supersedes the following:

Dog Control Order - Dog Fouling (District Wide) 2011

Dog Control Order - Dogs Exclusion Order (City Park) 2011

Dog Control Order - Dogs on Leads Order (City Park) 2011

Dog Control Order - Dogs Exclusion (CBMDC) Order 2013

Dog Control Order - Dogs on Lead by direction (CBMDC) Order 2013

Dog Control Order - Dogs on Leads (CBMDC) Order 2013

Extending:

Bradford Metropolitan District Council Public Spaces Protection Order 2017 (Dog Control) dated 20<sup>th</sup> October 2017,

Bradford Metropolitan District Council Composite Public Spaces Protection Order 2021 (Dog Control) dated 8<sup>th</sup> April 2021

This Order is made on xx xxxx 2024 and shall have effect for a period of 3 years thereafter, unless extended, varied or discharged by further order(s) under the Council’s statutory powers. This Order can be extended pursuant to Section 60 of the Act.

In this Order the following definitions apply:

“**Person in Charge**” means the person who has the dog in their possession, care or company at the time the offence is committed or, if none, the owner or person who habitually has the dog in their possession.

“**Public Place**” means any place in the administrative area of the Council to which the public, or any section of the public has access on payment or otherwise, as of right or by virtue of express or implied permission. The administrative area of the Council is the land described and/or shown on the map in Schedule 1 to this Order.

“**Restricted Area**” means the land described and/or shown in the map in Schedule 1 to this order.

“**Authorised Person**” means a Police Officer, PCSO, Council Officer, and persons authorised by the Council to enforce this Order.

“**Assistance Dog**” means a dog that is trained to aid or assist a disabled person.

### **Article 1 – Dog Fouling**

1. If within the restricted area a dog defecates, in any Public Place, at any time, the person who is in charge of the dog at the time must remove the faeces forthwith, unless they have a reasonable excuse for failing to do so.

2. For the purposes of this Article –

- a. Placing the faeces in a receptacle in the restricted area which is provided for the purpose, or for the disposal of litter or waste, shall be a sufficient removal from the Public Place.
- b. Being unaware of the defecation (whether by reason of not being in the vicinity or otherwise), or not having a device for, or other suitable means of, removing the faeces shall not be a reasonable excuse for failing to remove the faeces.

3. This part of the Order applies to all Public Places in the administrative area of the Council (as detailed in Schedule 1).

### **Article 2 – Means to Pick Up**

1. A person in charge of a dog, at any time, within the Restricted area must have and produce on request the appropriate means to pick up dog faeces deposited by that dog, unless they have a reasonable excuse for failing to do so.

The obligation is complied with if, after a request from an authorised officer, the person in charge of the dog produces an appropriate means to pick up dog faeces.

### **Article 3 – Dogs on leads by direction**

1. A person in charge of a dog, at any time, within the Restricted area, must comply with a direction given to them by an Authorised Person to put and keep the dog on a lead for such period and/or in such circumstances as directed by that person, unless they can show that:

- a. they have a reasonable excuse for failing to do so; or
- b. the owner, occupier or other person or authority having control of the Public Place in question has consented (generally or specifically) to their failing to do so.

2. For these purposes, a 'lead' means any rope, cord, leash or similar item used to tether, control or restrain a dog, but does not include any such item which is not actively being used as a means of restraint so that the dog remains under a person's close control.

3. This part of the Order applies to all Public Places in the administrative area of the Council (as detailed in Schedule 1).

4. An Authorised Person may only give a direction under this Article if such restraint is considered by that person to be reasonably necessary to prevent a nuisance or behaviour by the dog that is likely to cause annoyance or disturbance to any other person, or other animal.

### **Article 4 – Dogs on lead areas**

1. A person in charge of a dog in any public place detailed in Schedule 2 must keep that dog on lead, unless they can show that:

- a. they have a reasonable excuse for doing so; or
- b. the owner, occupier or other person or authority having control of the land has consented (generally or specifically) to their failing to do so.

2. For these purposes, a 'lead' means any rope, cord, leash or similar item used to tether, control or restrain a dog, but does not include any such item which is not actively being used as a means of restraint so that the dog remains under a person's close control.

3. This part of the Order applies to bowling greens, cemeteries, sports ground, field, parks and pitches but only when in use for organised authorised events, footpaths around lakes and ponds and signed at its entrance(s) as a 'dog on lead area' (whether the sign uses those particular words or words and/or symbols having effect).

#### **Article 5 – Dog exclusion areas**

1. A person in charge of a dog must not, at any time, take that dog onto, or permit a dog to enter or to remain on, any Public Place detailed in Schedule 3 unless:

- a. they have a reasonable excuse for doing so; or
- b. the owner, occupier or other person or authority having control of the land has consented (generally or specifically) to their failing to do so.

2. This part of the Order applies to equipped play areas, Multi-use Games Area's, BMX and skate parks, interactive water features, Muslim sections of cemeteries and signed at its entrance(s) as a 'dog exclusion area' (whether the sign uses those particular words or words and/or symbols having effect).

#### **Exemptions**

Any person with a disability affecting their mobility, manual dexterity or ability to lift carry or move everyday objects or who relies upon a dog trained by a prescribed charity for assistance are exempt from the prohibition and requirements of this order.

Nothing in this Order shall apply to a dog being used by the police, contractors or agencies permitted by the Council for official purposes.

#### **Offence and Penalty**

It is an offence under Section 67 of the Act for a person without reasonable excuse, (i) to do anything that they are prohibited from doing under the Order or (ii) to fail to comply with a requirement which they are subject to under the Order. A person guilty of an offence under section 67 is liable on summary conviction to a fine not exceeding level 3 on the standard scale. In the alternative, that person may be issued with a fixed penalty notice by an Authorised Person in the sum of £100. If the fixed penalty notice is paid within seven days, a discounted sum will be payable of £80.

Date: xx xxxxx 2024

The Common Seal of the City of Bradford Metropolitan District Council was hereto affixed in the presence of:

Authorised Signatory

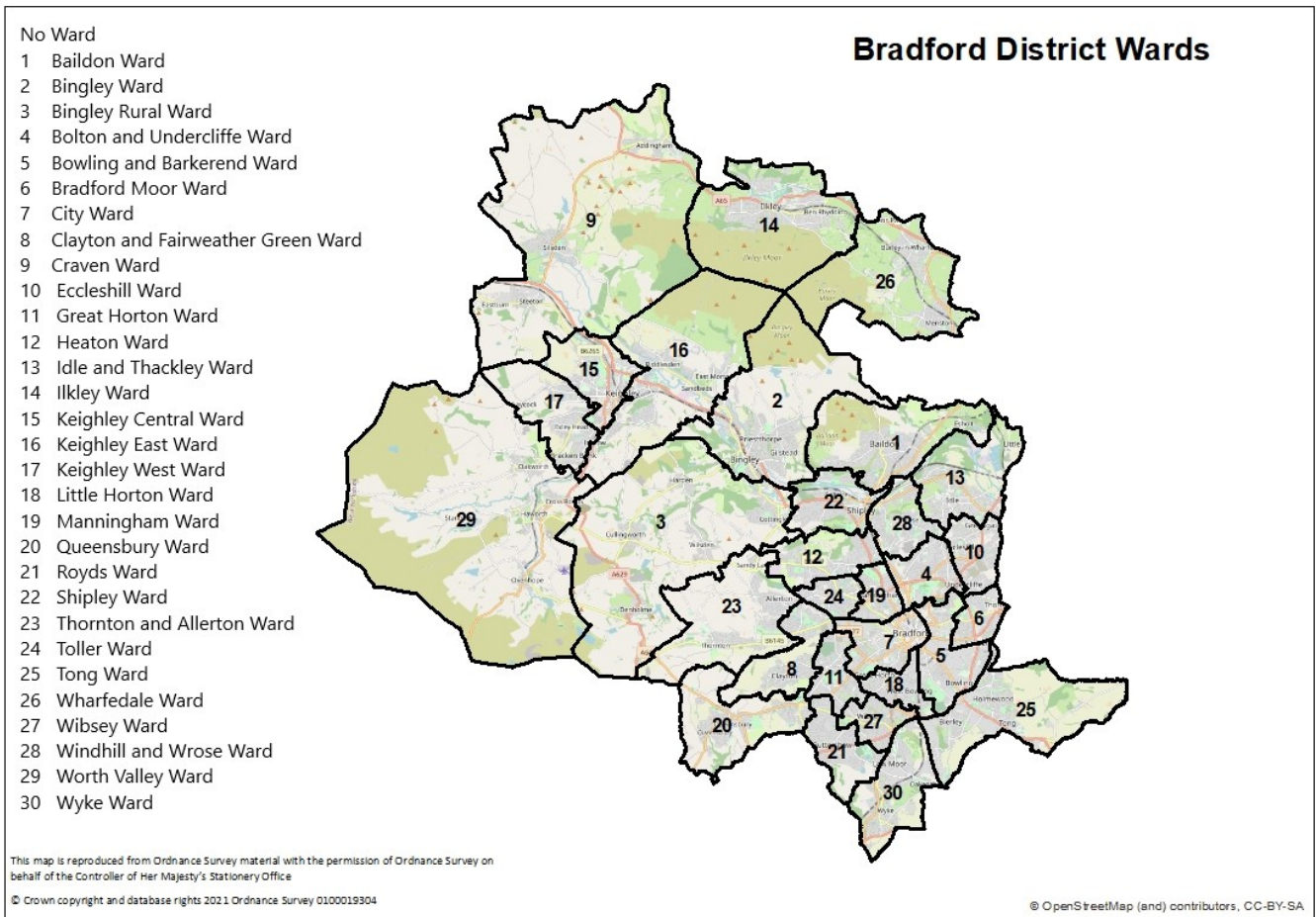
## **Schedule 1**

### **Article 1 – Dog Fouling**

### **Article 2 – Means to Pick Up**

### **Article 3 – Dogs on leads by direction**

This part of the order applies to all Public Places in the administrative area of the Council, as illustrated by the map on the following page.



## Schedule 2

### Article 4 – Dogs on lead areas

This part of the Order applies to bowling greens, cemeteries, sports grounds, fields, parks and pitches but only when in use for organised authorised events, footpaths around lakes and ponds and signed at its entrance(s) as a 'dog on lead area' (whether the sign uses those particular words or words and/or symbols to that effect).

Ref no.	Name	Location	Description	Ward
	<b>Ornamental gardens</b>			
1	Cliffe Castle	Spring Gardens Lane, Keighley	Café Gardens	Keighley Central
2	Harold Park	Park Road, Low Moor	Sensory Garden	Royds
3	Harold Park	Park Road, Low Moor	Boer War Memorial Garden	Royds
4	Haworth (Central) Park	Rawdon Road, Haworth	Whole Park	Worth Valley
5	Lister Park	North Park Road, Manningham	Mughal Water Garden & Cartwright Hall Forecourt	Manningham
6	Lister Park	North Park Road, Manningham	Botanical Garden	Manningham
7	Peel Park	Bolton Lane, Undercliffe	Pond Gardens	Bolton & Undercliffe
8	Roberts Park	Coach Road, Baildon	Whole Park	Shipley
	<b>Bowling Greens</b>			
9	Addingham Recreation Ground	Main Street, Addingham	Bowling Green Area	Craven
10	Asa Briggs Park	Highgate Road, Clayton Heights	Bowling Green Area	Queensbury
11	Bowling Park	Bowling Hall Road, East Bowling	Bowling Green Area	Bowling & Barkerend
12	Brackenhill Park	Hollingwood Lane, Great Horton	Bowling Green Area	Great Horton
13	Bradford Moor Park	Killinghall Road	Bowling Green Area	Bradford Moor
14	Crossroads Park	Crossroads, Keighely	Bowling Green Area	Worth Valley
15	Crowgill Park	Shipley	Bowling Green Area	Shipley
16	Cullingworth Recreation Ground	Halifax Road, Cullingworth	Bowling Green Area	Bingley Rural
17	Eccleshill Recreation Ground	Stone Hall Road, Eccleshill	Bowling Green Area	Eccleshill
18	Foster Park	Denholme	Bowling Green Area	Bingley Rural
19	Grange Park	Burley In Wharfedale	Bowling Green Area	Wharfedale

20	Greengates Recreation Ground	Off Harrogate Road Greengates	Bowling Green Area	Idle & Thackley
21	Harold Park	Park Road, Low Moor	Bowling Green Area	Royds
22	Haworth (Central) Park	Rawdon Road, Haworth	Bowling Green Area	Worth Valley
23	Highfield Recreation Ground	Highfield Lane, Keighley	Bowling Green Area	Keighley Central
24	Horton Park	Horton Park Avenue, Little Horton	Bowling Green Area	City
25	Idle Recreation Ground	Railway Road, Idle	Bowling Green Area	Idle & Thackley
26	Kirklands	Main Street, Menston	Bowling Green Area	Wharfedale
27	Ladyhill Park	Chapel Lane, Allerton	Bowling Green Area	Clayton & Fairweather Green
28	Lister Park	North Park Road, Manningham	Bowling Green Area	Manningham
29	Lund Park	Malsis Road, Keighley	Bowling Green Area	Keighley Central
30	Middleton Recreation Ground	Middleton Avenue, Ilkley	Bowling Green Area	Ilkley
31	Myrtle Park	Myrtle Place, Bingley	Bowling Green Area	Bingley
32	Northcliffe Park	Bradford Road, Shipley	Bowling Green Area	Shipley
33	Oakworth (Holden) Park	Keighley Road, Oakworth	Bowling Green Area	Worth Valley
34	Oxenhope Recreation Ground	Hebden Bridge Road, Oxenhope	Bowling Green Area	Worth Valley
35	Peel Park	Bolton Lane, Undercliffe	Bowling Green Area	Bolton & Undercliffe
36	Royd House	Main Street, Wilsden	Bowling Green Area	Bingley Rural
37	Russell Hall Park	Russell Hall Lane, Queensbury	Bowling Green Area	Queensbury
38	Silsden Park	Bolton Road, Silsden	Bowling Green Area	Craven
39	Steeton Bowling Green	Stone Grove, Steeton	Bowling Green Area	Craven
40	Temple Rhydding	Temple Rhydding Drive, Baildon	Bowling Green Area	Baildon
41	Thornton (Wensley Bank)	Wensley Bank West, Thornton	Bowling Green Area	Thornton & Allerton
42	Victoria Park (Clayton)	Clayton Lane, Clayton	Bowling Green Area	Clayton & Fairweather Green
43	Victoria Park (Oakenshaw)	Cleckheaton Road, Oakenshaw	Bowling Green Area	Wyke
44	West Park	West Park Road, Girdlington	Bowling Green Area	Toller
45	Whinswood Recreation Ground	Hilltop Road, Keighley	Bowling Green Area	Keighley East
46	Wibsey Park	Beacon Road, Wibsey	Bowling Green Area	Wibsey

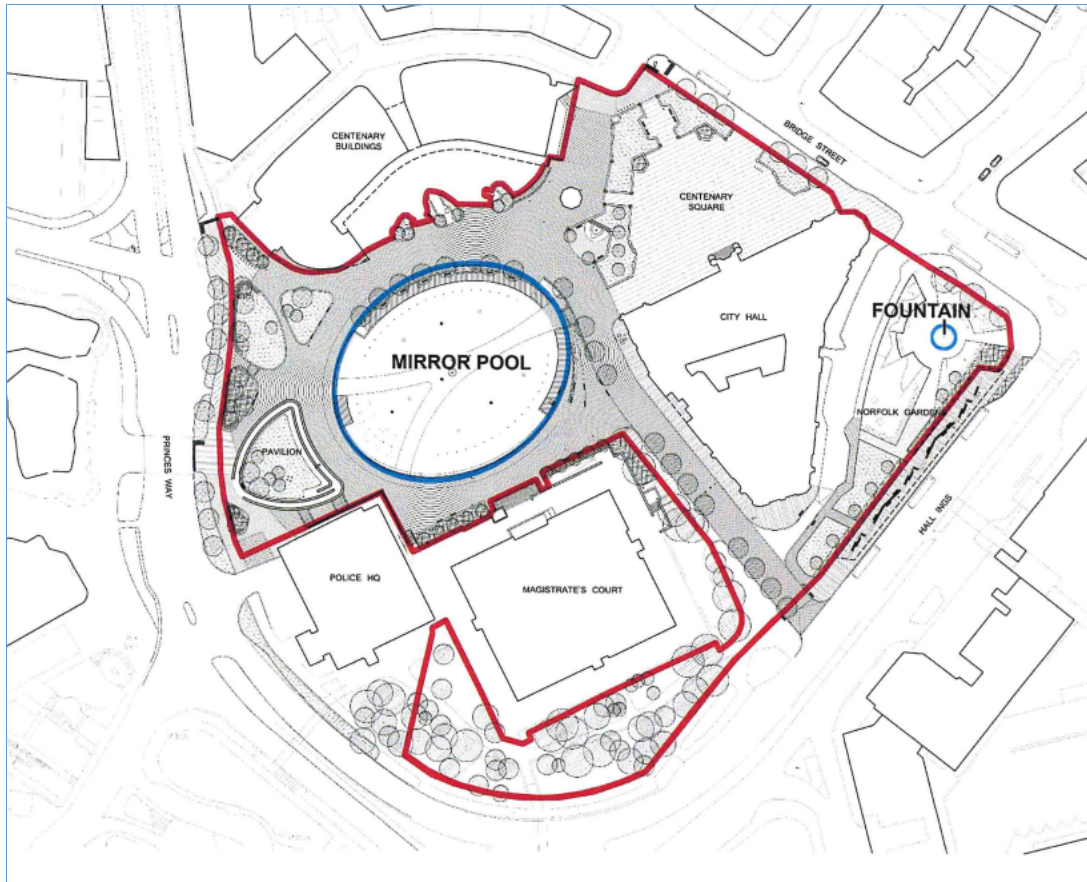


47	Wyke Recreation Ground	Mayfield Terrace, Wyke	Bowling Green Area	Wyke
	Cemeteries			
48	Bowling Cemetery	Rooley Lane Bradford	Cemetery	Little Horton
49	Clayton Cemetery	Middle Lane Clayton Bradford	Cemetery	Clayton & Fairweather Green
50	North Bierley Cemetery	Cemetery Road Buttershaw Bradford	Cemetery	Wibsey
51	Queensbury Cemetery	West End Queensbury	Cemetery	Queensbury
52	Scholemoor Cemetery & Crematorium	Necropolis Road Bradford	Cemetery ./Crematorium	Great Horton
53	Thornton Cemetery	Thorton Road Thorton Bradford	Cemetery	Thornton & Allerton
54	Tong Cemetery	Tong Street Bradford	Cemetery	Tong
55	Nab Wood Cemetery & Crematorium	Bingley Road Shipley	Cemetery /Crematorium	Shipley
56	Bingley Cemetery	Bailey Hills Road Bingley	Cemetery	Bingley
57	Charlestown Cemetery	Otley Road Charlestown	Cemetery	Baildon
58	Wilsden Cemetery	Shay Lane Wilsden	Cemetery	
59	Menston Cemetery	Bradford Road Menston	Cemetery	Wharfedale
60	Windhill Cemetery	Owlet Road Windhill Shipley	Cemetery	Windhill & Wrose
61	God's Acre Cemetery	Bradford Road Burley in Wharfedale	Cemetery	
62	Utley Cemetery	Skipton Road Keighley	Cemetery	
63	Oakworth Cemetery & Crematorium	Wide Lane Oakworth Keighley	Cemetery / Crematorium	Worth Valley
64	Ilkley Cemetery	Ashlands Road Ilkley	Cemetery	
65	Morton Cemetery	Bradford Road Sandbeds Keighley	Cemetery	
66	Haworth Cemetery	Cemetery Road Haworth	Cemetery	Worth Valley
67	Stanbury Cemetery	Sladen Bridge Stanbury Keighley	Cemetery	
68	Oxenhope Cemetery	Hebden Bridge Road Oxenhope Keighley	Cemetery	Worth Valley
69	Silsden Cemetery	Howden Road Silsden	Cemetery	
70	Steeton Cemetery	Emsley Street, Steeton Keighley	Cemetery	Craven
71	Silsden Churchyard	West View Silsden Keighley	Cemetery	
72	Undercliffe Cemetery*	Undercliffe Lane Bradford	Cemetery	Bolton & Undercliffe
73	Shay Grange Crematorium	Long Lane Bradford	Crematorium	
74	Bierley Crematorium (under construction)	Shetcliffe Lane Bradford	Crematorium	
	<b>Various</b>			

75	Horton Bank Country Park	Queensbury	Footpath around the water course	Queensbury
77	Ben Rhydding Gravel Pits	Ilkley	Footpath around the water course	Ilkley

\* Undercliffe Cemetery is not managed by the Council but by a charitable trust. The Council own the cemetery land but lease it to the trust.

**City Park - Dogs on Leads applies to the area within the red boundary.**



### **Schedule 3**

#### **Article 5 – Dog exclusion areas**

This part of the Order applies to equipped play areas, Multi-use Games Area's, BMX and skate parks, interactive water features, Muslim sections of cemeteries and signed at its entrance(s) as a 'dog exclusion area' (whether the sign uses those particular words or words and/or symbols to that effect).

<b>Ref</b>	<b>Constituency</b>	<b>Name</b>	<b>Location</b>	<b>Description</b>	<b>Ward</b>
1	Keighley	Addingham Recreation Ground	Silsden Road, Addingham	Equipped Play Area	Craven
2	Keighley	Arctic Street Recreation Ground	Arctic St. Utley	Equipped Play Area	Keighley Central
3	Keighley	Backstone Way	Backstone Way Ilkley	Equipped Play Area	Ilkley
4	Keighley	Beeches Play Area	Beeches Road, Stockbridge	Equipped Play Area	Keighley Central
5	Keighley	Brackenbak Crescent	Brackenbank Crescent	Equipped Play Area	Keighley West
6	Keighley	Brackenbank Ave, Comm Centre	Brackenbank Crescent	Multi-use Games Area	Keighley West
7	Keighley	Byre Lane/Wheatlands	Wheatlands	Equipped Play Area	Keighley West
8	Keighley	Cliffe Castle Park	Spring Gardens Lane	Equipped Play Area	Keighley Central
9	Keighley	Cross Roads Park	Haworth Road, Crossroads	Equipped Play Area	Worth Valley
10	Keighley	Cross Roads Park	Haworth Road, Crossroads	BMX / Skatepark	Worth Valley
11	Keighley	Devonshire Park	Spring Gardens Lane	Multi-use Games Area	Keighley Central
12	Keighley	Devonshire Park	Spring Gardens Lane	Equipped Play Area	Keighley Central
13	Keighley	East Morton Recreation Ground	Main Road	Equipped Play Area	Keighley East
14	Keighley	Granby Lane Recreation Ground	Granby Lane	Equipped Play Area	Keighley East
15	Keighley	Haworth Park	Bridgehouse Lane	Equipped Play Area	Worth Valley
16	Keighley	Fell Lane Recreation Ground	Fell Lane	Equipped Play Area	Keighley Central
17	Keighley	Highfield Rec / Burgess Fields	Highfield Lane	Equipped Play Area	Keighley Central
18	Keighley	Highfield Rec / Burgess Fields	Highfield Lane	Multi-use Games Area	Keighley Central
19	Keighley	Litton Street Play Area	Litton Street	Equipped Play Area	Keighley Central
20	Keighley	Long Lee Recreation Ground	Calton Road	Equipped Play Area	Keighley Central
21	Keighley	Longlands Farm	Vale Mill Lane	Equipped Play Area	Keighley West
22	Keighley	Lund Park Junior Play Area	Malsis Road	Equipped Play Area	Keighley Central
23	Keighley	Lund Park Toddler Play Area	Malsis Road	Equipped Play Area	Keighley Central
24	Keighley	Lund Park	Malsis Road	BMX / Skatepark	Keighley Central
25	Keighley	Mallard View Oxenhope	Mallard View	Equipped Play	Worth Valley

				Area	
26	Keighley	Middleton Avenue	Middleton Avenue	BMX / Skatepark	Wharfedale
27	Keighley	Mytholmes Recreation Ground	Mytholmes Lane	Equipped Play Area	Worth Valley
28	Keighley	North Dean Road	North Dean Road	Equipped Play Area	Keighley Central
29	Keighley	Oakworth Park	Oakworth Road	Equipped Play Area	Worth Valley
30	Keighley	Oxenhope Recreation Ground	Shaw Lane	Equipped Play Area	Worth Valley
31	Keighley	Parkwood Street	Parkwood Street	Equipped Play Area	Keighley Central
32	Keighley	Parson Street	Parson Street	Equipped Play Area	Keighley Central
33	Keighley	Riverside Gardens	Bridge Lane	Equipped Play Area	Ilkley
34	Keighley	Silsden Playing Fields	Bolton Road	BMX / Skatepark	Craven
35	Keighley	Silsden Playing Fields	Bolton Road	Equipped Play Area	Craven
36	Keighley	Silsden Road Play Area	Bolton Road	Equipped Play Area	Craven
37	Keighley	Stanbury Recreation Ground	Sun Lane	Equipped Play Area	Worth Valley
38	Keighley	Steeton Bowls Club	Skipton Road	Equipped Play Area	Craven
39	Keighley	Steeton Recreation Ground	Keighley Road	Equipped Play Area	Craven
40	Keighley	Thwaites Brow	Brow Road	Equipped Play Area	Keighley East
41	Keighley	Trinity Street	Trinity Street	Equipped Play Area	Keighley East
42	Keighley	Utley Recreation Ground	Skipton Road	Equipped Play Area	Keighley Central
43	Keighley	Victoria Park	Hard Ings Road	Equipped Play Area	Keighley Central
44	Keighley	Victoria Park	Hard Ings Road	Multi-use Games Area	Keighley Central
45	Keighley	White Bear Recreation Ground	Skipton Road	Equipped Play Area	Craven
46	North	Amberley Street Attock Park	Amberley Street, Bradford	Equipped Play Area	Bradford Moor
47	North	Amberley Street Attock Park	Amberley Street, Bradford	Multi-use Games Area	Bradford Moor
48	North	Amberley Street Attock Park	Amberley Street, Bradford	Multi-use Games Area	Bradford Moor
49	North	Amberley Street Attock Park	Amberley Street, Bradford	Equipped Play Area	Bradford Moor
50	North	Back Derby Place	Back Derby Place, Bradford	Equipped Play Area	Bradford Moor
51	North	Beech Grove	Beech Grove, Bradford	Equipped Play Area & Multi-use Games Area	Bowling & Barkerend
52	North	Bowling Park Bottom	Bowling Hall Road, Bradford	Equipped Play Area	Bowling & Barkerend
53	North	Bowling Park Top	Bowling Hall Road, Bradford	Equipped Play Area & Multi-use Games Area	Bowling & Barkerend
54	North	Bradford Moor Park	Killinghall Road, Bradford	Equipped Play Area	Bradford Moor
55	North	Bradford Moor Park	Killinghall Road,	4 x Multi-use	Bradford Moor

			Bradford	Games Area	
56	North	The Delph (Institute Rd Rec)	Institute Road, Eccleshill	Equipped Play Area	Eccleshill
57	North	Eccleshill Park (Rimswell Holt)	Rimswell Holt, Greengates	Equipped Play Area	Eccleshill
58	North	Eccleshill Park (Rimswell Holt)	Rimswell Holt, Greengates	BMX / Skatepark	Eccleshill
59	North	Eccleshill Park (Rimswell Holt)	Rimswell Holt, Greengates	BMX / Skatepark	Eccleshill
60	North	Greengates Recreation Ground	Brunswick Road, Greengates	Equipped Play Area	Idle & Thackley
61	North	Greengates Recreation Ground	Brunswick Road, Greengates	Multi-use Games Area	Idle & Thackley
62	North	Hubert Street	Hubert Street, Bradford	Equipped Play Area	Bradford Moor
63	North	Idle Recreation Ground	Cross Road, Idle	Equipped Play Area	Idle & Thackley
64	North	Idle Recreation Ground	Cross Road, Idle	BMX / Skatepark	Idle & Thackley
65	North	Idle Recreation Ground	Cross Road, Idle	Multi-use Games Area	Idle & Thackley
66	North	Lupton Street	Lupton Street, Bradford	Equipped Play Area	Manningham
67	North	Lupton Street	Lupton Street, Bradford	Multi-use Games Area	Manningham
68	North	Myra Shay	Tewitt Hall Road, Bradford	Equipped Play Area	Bradford Moor
69	North	Peel Park Cliffe Road	Cliffe Road, Bradford	Equipped Play Area	Bolton & Undercliffe
70	North	Peel Park Lake Area	Bolton Road, Bradford	Equipped Play Area	Bolton & Undercliffe
71	North	Peel Park	Cliffe Road, Bradford	BMX / Skatepark	Bolton & Undercliffe
72	North	Ravenscliffe Community Centre	Ravenscliffe Avenue, Ravenscliffe	Equipped Play Area	Eccleshill
73	North	Ravenscliffe Community Centre	Ravenscliffe Avenue, Ravenscliffe	Multi-use Games Area	Eccleshill
74	North	Upper Seymour Street Recreation Ground	Seymour Street, Bradford	Equipped Play Area	Bowling & Barkerend
75	North	Springfield, Thorpe Edge.	Cavendish Road, Springfield	Multi-use Games Area	Idle & Thackley
76	North	Thurnscoe Road	Thurnscoe Road, Bradford	Equipped Play Area	Manningham
77	Shipley	Baker Street	Baker Street, Saltaire	Equipped Play Area	Shipley
78	Shipley	Bingley Road Menston/ Menston log area	Bingley Road, Menston	Equipped Play Area	Wharfedale
79	Shipley	Binns Street, Bingley/ Jerr Wood	Binns Street, Bingley	Equipped Play Area	Bingley
80	Shipley	Bolton Woods (Livingstone Rd)	Livingstone Road, Bolton Woods	Equipped Play Area	Windhill & Wrose
81	Shipley	Burley Grange Park	Grange Road, B in W	Equipped Play Area	Wharfedale
82	Shipley	Claremont Rec	Wrose Road, Wrose	Equipped Play Area	Windhill & Wrose
83	Shipley	Cliffe Avenue	Cliffe Avenue, Baildon	Equipped Play Area	Baildon
84	Shipley	Cottingley Manor	Cottingley New Road	Equipped Play Area	Bingley Rural

85	Shipley	Cottingley Manor	Cottingley New Road	BMX / Skatepark	Bingley Rural
86	Shipley	Cottingley Rec	Moorfield Road	Multi-use Games Area	Bingley Rural
87	Shipley	Crossflats Rec	Moorfield Road	Equipped Play Area	Bingley
88	Shipley	Crowgill Park Skate Board Area	Crowgill Road	BMX / Skatepark	Shipley
89	Shipley	Cullingworth Rec	Halifax Road, Cullingworth	Equipped Play Area	Bingley Rural
90	Shipley	Denholme Gate PA	Halifax Road, Denholme	Equipped Play Area	Bingley Rural
91	Shipley	Derry Lane Menston	Derry Lane, Menston	Equipped Play Area	Wharfedale
92	Shipley	Eldwick Rec	Otley Road, Eldwick	Equipped Play Area	Bingley
93	Shipley	Esholt Rec	Chapel Lane	Equipped Play Area	Baildon
94	Shipley	Fairbank Place	Fairbank Place	Equipped Play Area	Windhill & Wrose
95	Shipley	Farnley Road Menston (Leathley Road)	Leathley Road, Menston	Equipped Play Area	Wharfedale
96	Shipley	Foster Park	Parkinson Road	Equipped Play Area	Bingley Rural
97	Shipley	Foster Park MUGA	Parkinson Road	Multi-use Games Area	Bingley Rural
98	Shipley	Gilstead Rec	Primrose Lane, Gilstead	Equipped Play Area	Bingley
99	Shipley	Harden Memorial Park	Harden Road, Harden	Equipped Play Area	Bingley Rural
100	Shipley	Hirstwood Lane	Hirst Lane, Shipley	Equipped Play Area	Shipley
101	Shipley	Hollin Lane	Hollin Lane, Shipley	Equipped Play Area	Windhill & Wrose
102	Shipley	Jenny Lane Rec	Jenny Lane, Baildon	Equipped Play Area	Baildon
103	Shipley	Menston Main Street	Main Street, Menston	Equipped Play Area	Wharfedale
104	Shipley	Myrtle Park - Skate Area	Thrifty Way, Bingley	BMX / Skatepark	Bingley
105	Shipley	Myrtle Park - junior play Area	Thrifty Way, Bingley	Equipped Play Area	Bingley
106	Shipley	Myrtle Park - toddler	Thrifty Way, Bingley	Equipped Play Area	Bingley
107	Shipley	Northcliffe Park	Bradford Road, Shipley	Equipped Play Area	Shipley
108	Shipley	Oakleigh View	Oakleigh View, Baildon	Equipped Play Area	Baildon
109	Shipley	Oswald Street	Oswald Street	Equipped Play Area	Windhill & Wrose
110	Shipley	Roberts Park	Coach Road, Shipley	Equipped Play Area	Shipley
111	Shipley	Roberts Park	Coach Road, Shipley	BMX / Skatepark	Shipley
112	Shipley	Rosemount Lower Baildon	Rosemount, Baildon	Equipped Play Area	Baildon
113	Shipley	Royd House Wilsden	Firth Lane Wilsden	Equipped Play Area	Bingley Rural
114	Shipley	Royd House Wilsden	Royd House, Wilsden	Multi-use Games Area	Bingley Rural

115	ShIPLEY	ShIPLEY central	Westcliffe Road, ShIPLEY	Equipped Play Area	ShIPLEY
116	ShIPLEY	ShIPLEY Fields Road	ShIPLEY Fields Road, ShIPLEY	Equipped Play Area	ShIPLEY
117	ShIPLEY	Southcliffe Drive	Southcliffe Drive, Baildon	Equipped Play Area	Baildon
118	ShIPLEY	St Ives, Estate	Harden Road, Harden	Equipped Play Area	Bingley Rural
119	ShIPLEY	Thackley Old Road	Thackley Old Road	Equipped Play Area	Idle & Thackley
120	ShIPLEY	Thompson Lane	Thompson Lane, Baildon	Equipped Play Area	ShIPLEY
121	ShIPLEY	Tong Park Play Area	Otley Road, Lower Baildon	Equipped Play Area	Baildon
122	ShIPLEY	Windhill Rec	Carr Lane, Windhill	Equipped Play Area	Windhill & Wrose
123	ShIPLEY	Windhill Rec MUGA	Carr Lane, Windhill	Multi-use Games Area	Windhill & Wrose
124	ShIPLEY	Windyhill Rec	West Royd Avenue	Equipped Play Area	Windhill & Wrose
125	ShIPLEY	Wrose Rec	Wrose Grove, Wrose	Equipped Play Area	Windhill & Wrose
126	ShIPLEY	Iron Row Rec.	York Road	BMX / Skatepark	Wharfedale
127	South	Alexandra Street, Queensbury	Alexandra Street, Queensbury	Equipped Play Area	Queensbury
128	South	Asa Briggs Park	Highgate Road, Queensbury	Equipped Play Area	Queensbury
129	South	Bierley Community Centre	Hambledon Avenue, Bierley	Multi-use Games Area	Tong
130	South	Bierley House Bottom	Bierley House Avenue, Bierley	Equipped Play Area	Tong
131	South	Bierley House Top	Bierley House Avenue, Bierley	Equipped Play Area	Tong
132	South	Bierley Lane	Gleneagles Close, Bierley	Equipped Play Area	Tong
133	South	Blackshaw Beck	Farfield Avenue, Buttershaw	Equipped Play Area	Royds
134	South	Brackenhill Park	Hollingwood Lane, Bradford	Equipped Play Area	Great Horton
135	South	Brackenhill Park	Hollingwood Lane, Bradford	Equipped Play Area	Great Horton
136	South	Buttershaw Recreation Ground	Farfield Avenue, Buttershaw	Equipped Play Area	Royds
137	South	Buttershaw Recreation Ground	Farfield Avenue, Buttershaw	Multi-use Games Area	Royds
138	South	Collinfield Rise	Collinfield Rise, Buttershaw	Multi-use Games Area	Royds
139	South	Collinfield Rise Play Area	Collinfield Rise, Buttershaw	Equipped Play Area	Royds
140	South	Dane Hill Drive	Danehill Drive, Holme Wood	Equipped Play Area	Tong
141	South	Dane Hill Drive	Danehill Drive, Holme Wood	BMX / Skatepark	Tong
142	South	Dunsford Avenue	Dunsford Avenue, Bierley	Equipped Play Area	Tong
143	South	Emsley's Recreation Ground	Bowling Old Lane, West Bowling	Equipped Play Area	Wibsey
144	South	Eversley Drive	Eversley Drive, Holme Wood	Equipped Play Area	Tong
145	South	Grouse Moor Lane	Grousemoor Lane,	Equipped Play	Queensbury

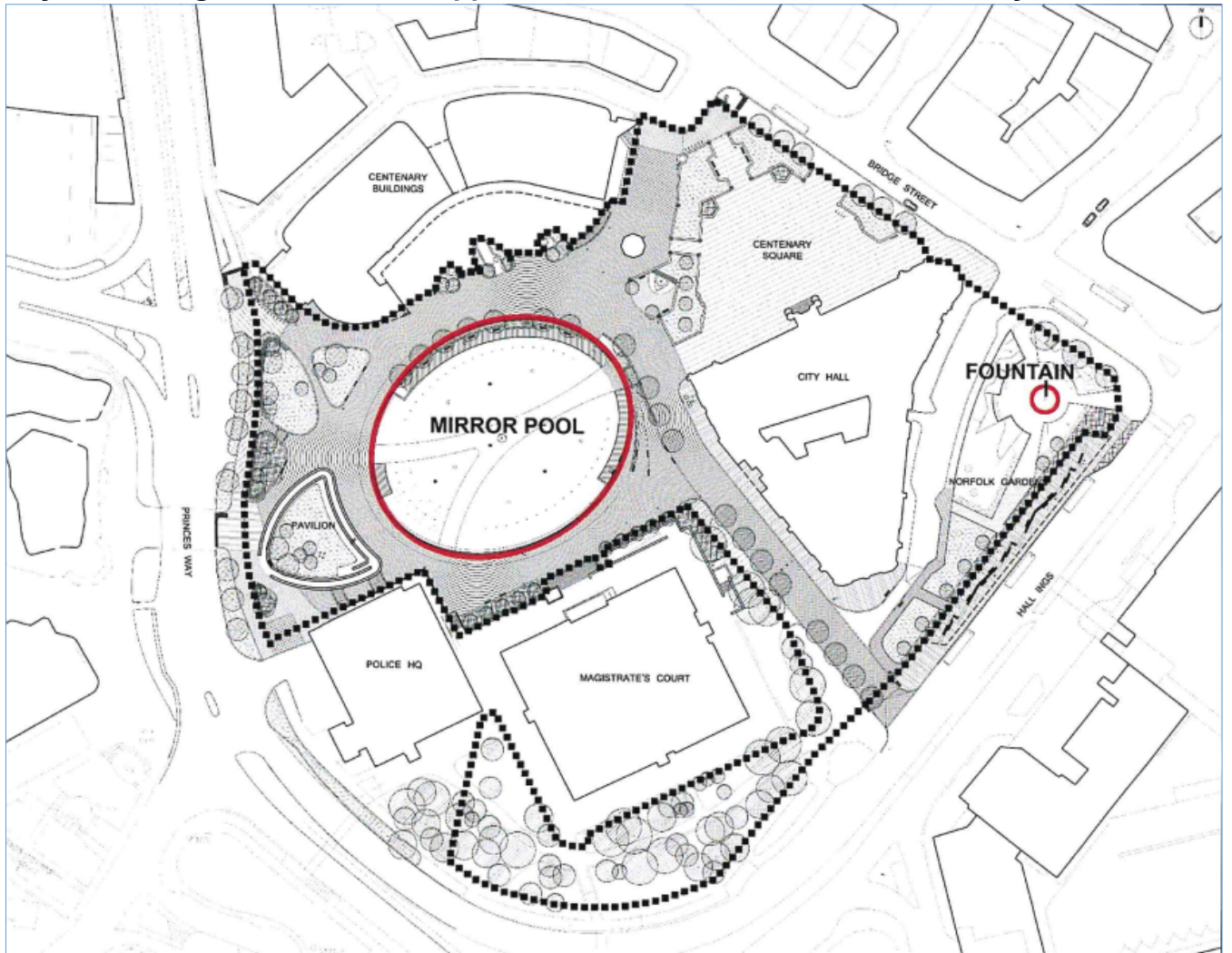
			Queensbury	Area	
146	South	Harold Park	Cemetery Road, Low Moor	Equipped Play Area	Royds
147	South	Hopefield Way	Hopefield Way, Bierley	Equipped Play Area	Tong
148	South	Marshfields Play Area	Roundhill Street, Holme Top	Equipped Play Area	Little Horton
149	South	Oakenshaw Park	Cleckheaton Road, Oakenshaw	Equipped Play Area	Wyke
150	South	Oakenshaw Park	Cleckheaton Road, Oakenshaw	BMX / Skatepark	Wyke
151	South	Penrose Drive/Bartle Lane	Penrose Drive, Great Horton	Equipped Play Area	Great Horton
152	South	Russell Hall Park	Russell Lane, Queensbury	Equipped Play Area	Queensbury
153	South	Scholemoor play area	Ashfold, Scholemoor	Equipped Play Area & Multi-use Games Area	Great Horton
154	South	Stirling Crescent	Sterling Crescent, Holme Wood	Equipped Play Area	Tong
155	South	Upper Wyke Recreation Ground	Huddersfield Road, Upper Wyke	Equipped Play Area	Wyke
156	South	Upper Wyke Recreation Ground	Huddersfield Road, Upper Wyke	BMX / Skatepark	Wyke
157	South	Wibsey Park	Beacon Road, Wibsey	Equipped Play Area	Wibsey
158	South	Wibsey Park	Beacon Road, Wibsey	Multi-use Games Area	Wibsey
159	South	Wibsey Park	Beacon Road, Wibsey	BMX / Skatepark	Wibsey
160	South	Winchester Gardens	Winchester Gardens, Cutler Heights	Equipped Play Area	Tong
161	South	Woodlands Play Area	Mill Carr Hill Road, Oakenshaw	Equipped Play Area	Tong
162	South	Woodroyd Terrace	Parkside Road, West Bowling	Equipped Play Area	Little Horton
163	South	Woodroyd Terrace	Parkside Road, West Bowling	Multi-use Games Area X 2	Little Horton
164	West	Lister View	Lister View, Manningham	Equipped Play Area	Manningham
165	West	West Park	West Park Road, Girlington	Equipped Play Area	Toller
166	West	West Park	West Park Road, Girlington	Multi-use Games Area	Toller
167	West	West Park	West Park Road, Girlington	BMX / Skatepark	Toller
168	West	Greenway Play Area	Greenway Drive,	Equipped Play Area	Thornton & Allerton
169	West	Greenwood Park	Wilsden Road, Sandy Lane	Equipped Play Area	Thornton & Allerton
170	West	Greenwood Park	Wilsden Road, Sandy Lane	BMX / Skatepark	Thornton & Allerton
171	West	Haworth Road	Aygill Avenue, Bradford	Equipped Play Area	Heaton
172	West	Haworth Road Recreation Ground	Haworth Road, Bradford	Equipped Play Area & Multi-use Games Area	Heaton
173	West	Heaton Hill Recreation Ground	off Paradise Road, Heaton	Equipped Play Area	Heaton



174	West	Horton Park	Horton Park Avenue	Equipped Play Area	City
175	West	Ladyhill Park	Chapel Lane, Allerton	Equipped Play Area	Clayton & Fairweather Green
176	West	Lister Park	North Park Road, Manningham	Equipped Play Area	Manningham
177	West	Lister Park	North Park Road, Manningham	Multi-use Games Area X 2	Manningham
178	West	Grovsner Centre	Manningham Lane	Equipped Play Area	Manningham
179	West	Listerhills/Legrans Street	Legrans Street, Listerhills	Equipped Play Area	City
180	West	Lumb Lane	Lumb Lane, Manningham	Equipped Play Area	Manningham
181	West	Mir Park	Ryan Street, West Bowling	Equipped Play Area	Little Horton
182	West	Mir Park	Ryan Street, West Bowling	Multi-use Games Area	Little Horton
183	West	Royd Street Thornton	Royd Street, Thornton	Equipped Play Area	Thornton & Allerton
184	West	Springcliffe	Springcliffe, Manningham	Equipped Play Area	Manningham
185	West	Springmill Street Rec	Springmill Street, W Bowling	Equipped Play Area	Little Horton
186	West	Springmill Street Rec	Springmill Street, W Bowling	Equipped Play Area	Little Horton
187	West	St Michaels Road Recreation Ground	St Michaels Road, Bradford	Equipped Play Area & Multi-use Games Area	Manningham
188	West	Victor Street	Victor Street, Manningham	Equipped Play Area	Manningham
189	West	Victoria Park, Clayton	Reva Syke Road, Clayton	Equipped Play Area	Clayton & Fairweather Green
190	West	Victoria Park Clayton	Reva Syke Road, Clayton	Multi-use Games Area	Clayton & Fairweather Green
191	West	Wensley Bank	Wensley Bank, Thornton	Multi-use Games Area	Thornton & Allerton
192	West	Westbourne Road	Lily Street, Manningham	Equipped Play Area	Manningham
193	West	Whetley Terrace	Whetley Terrace, Manningham	Equipped Play Area	Manningham
194	West	Woodhead Road Recreation Ground	Summerville Road, Shearbridge	Equipped Play Area	City
195		Bowling Cemetery	Rooley Lane Bradford	Muslim Sections P,Q	Little Horton
196		Scholemoor Cemetery	Necropolis Road Bradford	Muslim Sections CFM,MB,MC,MD	Great Horton
197		Utley Cemetery	Skipton Road Keighley	Muslim Sections S,Z	Keighley Central
198		Crosleywood Road (Peel House)	Crosleywood Road (Peel House) Bingley	Equipped play Area	
199		Harewood Road	Harewood Road Brackenbank	Multi-use Games Area	
200		Windsor Crescent	Windsor Crescent Oakworth	Equipped play Area	
201		Parkwood Rise (between Leylands and Delph House)	Parkwood Rise (between Leylands and Delph House) Parkwood Rise	Equipped play Area	

202		Avenel road	Avenel Road Allerton	BMX/Skatepark	
203		Hoopoe Mews	Hoopoe Mews Allerton	Multi-use Games Area	
204		Greenway Drive	Greenway Drive Allerton	Equipped play Area	
205		Strensall Green	Strensall Green Buttershaw	Equipped play Area & Multi-use Games Area	
206		Nurser Lane	Nurser Lane Canterbury	Equipped play Area	
207		Long Close	Long Close Delph Hill Wyke	Multi-use Games Area	
208		Flaxton Green	Flaxton Green Fagley	Equipped play Area	
209		Redcar Road	Redcar Road Greengates	Multi-use Games Area	
210		Radwell Drive	Radwell Drive Manchester Road	Multi-use Games Area	
211		Radwell Drive behind Douglas Towers	Radwell Drive behind Douglas Towers Manchester Road	Equipped play Area	
212		Radwell Drive between Ashton and Osmond House	Radwell Drive between Ashton and Osmond House Manchester Road	Equipped play Area	
213		Donald Avenue	Donald Avenue Odsal	Equipped play Area	
214		Carrholm Green	Carrholm Green Woodside	Equipped play Area	
215		Small pool Ilkley Moor	Moor adjacent to the Junction between Wells Road and Crossbeck Road	Interactive water feature.	Ilkley
216		Thornaby Drive Play Area	Thornaby Drive Clayton Bradford West	Equipped play Area	

**City Park - Dog Exclusion Area applies to the area within the red boundary.**



## **Appendix G Press Release issued 26/02/24**

### Views sought on dog fouling order review

People are being asked for their views on a legal order to clampdown on dog fouling and keeping dogs under control in designated areas.

Bradford Council currently has a Public Spaces Protection Order (PSPO) which requires dog owners to pick up after their dogs, but this expires in May 2024. They need to review the order before they can extend it.

The proposed new order includes the existing restrictions plus some updates. It requires the following of anyone in charge of a dog, in any public space within the district:

- Dog faeces is immediately picked up
- The person with the dog has a means to pick up faeces, e.g. a dog bag
- Instructions to keep a dog on a lead are followed
- Dogs are not brought into areas where they are excluded, unless they are assistance dogs.

Anyone who is found to breach these requirements could face court action and a fine of up to £1,000 or a fixed penalty notice of £100 which would be reduced to £80 if paid in ten days.

The consultation aims to gather information about which issues concern residents and businesses the most and will help to review the PSPO and the areas it covers.

Feedback from the consultation will be analysed and used to inform the decision about how to progress the PSPO and make sure it is fit for purpose for the years to come.

Comments and views can be submitted on the public consultation portal. <https://bradford.moderngov.co.uk/mgConsultationDisplay.aspx?ID=671>

Cllr Abdul Jabar, Portfolio Holder for Neighbourhoods and Community Safety, said: "Owners not cleaning up after their dogs makes public spaces unsightly and unpleasant, as well as posing a risk to young children. So this Public Space Protection Order is vital to clampdown on this issue and to ensure dogs are kept under control in designated areas."

Areas where dogs are must be on a lead include bowling greens, cemeteries, sports ground, field, parks and pitches when in use for organised authorised events, footpaths around lakes and ponds and signed at entrance(s) as a 'dog on lead area' or words/symbols to that effect.

Dog exclusion areas include equipped play areas, Multi-use Games Areas, BMX and skate parks, interactive water features, Muslim sections of cemeteries and areas displaying signs with 'dog exclusion area' or words/symbols to that like effect.

ENDS

Appendix H – Current Order.

<https://www.bradford.gov.uk/environment/dog-control-orders/2021-composite-public-space-protection-order-dog-control/>

## **CITY OF BRADFORD METROPOLITAN DISTRICT COUNCIL**

### **ANTI-SOCIAL BEHAVIOUR, CRIME AND POLICING ACT 2014.**

#### **The 2021 City of Bradford Metropolitan District Council (“the Council”) Composite Public Space Protection order (Dog Control).**

This Composite order (the order )is made by the Council under section 59 of the Anti-Social Behaviour, Crime and Policing Act 2014 (the Act).

1. The order refers to the public places , prohibitions and requirements described in the following six public space protection (2020) extension orders namely:-
  - (i) DISTRICT WIDE No1/2020 The Fouling of Land by Dogs Bradford Order 2011.
  - (ii) CITY PARK DOGS ON LEADS -No2/2020 The Dogs on leads (City of Bradford M D C) Order 2011.
  - (iii) CITY PARK DOG EXCLUSION AREA No3/2020 The Dogs exclusion (City of Bradford M D C) Order 2011.
  - (iv) DOGS EXCLUSION AREAS –GENERAL No4/2020 Dogs Exclusion (City of Bradford M. D. C.) Order 2013
  - (v) DOGS ON LEADS GENERAL No5/2020 relating to the extension of the Dogs on leads (City of Bradford M.D.C) Order 2013.
  - (vi) DOGS ON LEADS BY DIRECTION No6/2020 relating to the extension of the Dogs on Leads by Direction (City of Bradford M.D.C) Order 2013.
  
2. The Council is satisfied on reasonable grounds that make this order is necessary to prevent—
  - (a) occurrence or recurrence after that time of the activities identified in the order, or
  - (b) an increase in the frequency or seriousness of those activities after that time.
  
3. The effect of this Order is to impose the prohibitions and requirements as set out in Para 4 below from 00.01hours 1<sup>st</sup> June 2020 within the areas ( see also the schedule below ) referred to below namely:-
  - (i) Dog Fouling district wide (see plan No.1 attached).
  - (ii) City Park Dogs on leads ( see plan No 2 attached).
  - (iii) City Park Dogs exclusion area.(see plan No 3 attached).
  - (iv) Dogs exclusion areas general (see list No 1 attached).
  - (v) Dogs on leads general (see list No 2 attached).
  - (vi) Dogs on leads by direction.

4. The following prohibitions apply to persons in control of a dog or dogs namely:-
  - (i) to prohibit the dog(s) from entering those areas on list No 1 (various equipped play areas, MACAS and BMX/Skate board areas in the parks and recreation grounds and Muslim sections of cemeteries within the Bradford District).
  - (ii) To prohibit the dog(s) from entering the area of City Park shown on plan No 3.
  
5. The following requirements apply to all persons in charge of a dog or dogs namely:-
  - (i) remove all dog faeces deposited by the dog(s) from the land forthwith.
  - (ii) to carry a receptacle(s) to remove dog faeces e.g. a black plastic dog sack.
  - (iii) to keep the dog (s) on a lead on the bowling greens and cemeteries and other areas as listed in the various parks and recreation grounds and other ornamental gardens as shown on List No 2.
  - (iv) to keep the dog(s) on lead around all sports grounds, fields, parks, and pitches, but only when in use for organised authorised events;
  - (v) to keep the dog(s) on a lead on footpaths around lakes and ponds;
  - (vi) To comply with a direction given to him/her by an authorised officer of the Council to put and keep the dog on a lead.
  
6. Any person who fails without reasonable excuse to comply with a prohibition or requirement imposed on him/her by this Order or does anything that s/he is prohibited from doing or required to do by this Order commits an offence and is liable on summary conviction to a fine not exceeding level 3 on the standard scale or may be issued with a fixed penalty notice requiring payment of a sum not exceeding £100.
  
7. Any person with a disability affecting their mobility, manual dexterity or ability to lift, carry or move everyday objects or who relies upon a dog trained by a prescribed charity for assistance are exempt from the prohibitions and requirements of this order.
  
8. This Order will remain in force until midnight on 31<sup>st</sup> May 2023 or until earlier discharge.

SCHEDULE OF DOCUMENTS ATTACHED BTO THIS ORDER

- (i) Plan No.1 (City of Bradford Metropolitan District)
- (ii) Plan No 2 City Park Dogs on leads.
- (iii) Plan No 3 City Park Dogs exclusion area.
- (iv) List No 1 Dogs exclusion areas general.
- (v) List No 2 Dogs on leads general

GIVEN under the Seal of the City of Bradford Metropolitan District Council

THE CORPORATE COMMON SEAL of THE CITY OF BRADFORD METROPOLITAN DISTRICT COUNCIL

Was hereunto affixed in the presence

.....

Authorised by the City Solicitor

Date 8 April 2021.